

ILMC
6 HOURS OF ZHUHAI
 Free Practice 1
 Provisional Classification

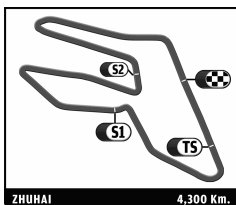
Nr.	Team	Drivers	Car	Cl	Ty	Time	Lap	Total	Gap	Kph
1	8 PEUGEOT SPORT TOTAL	F. Montagny / S. Sarrazin	Peugeot 908	LM P1	M	1:21.999	10	46	-	188.8
2	7 PEUGEOT SPORT TOTAL	S. Bourdais / A. Davidson	Peugeot 908	LM P1	M	1:22.495	19	53	+0.496	187.6
3	2 AUDI SPORT TEAM JOEST	T. Kristensen / A. McNish	Audi R18 TDI	LM P1	M	1:23.608	23	54	+1.609	185.1
4	1 AUDI SPORT TEAM JOEST	T. Bernhard / M. Fässler	Audi R18 TDI	LM P1	M	1:24.312	9	53	+2.313	183.6
5	12 REBELLION RACING	N. Jani / N. Prost	Lola B10/60 Coupé - Toyota	LM P1	M	1:25.533	28	33	+3.534	181.0
6	15 OAK RACING	M. Lahaye / G. Moreau / P. Ragues	Oak Pescarolo - Judd	LM P1	D	1:25.973	10	41	+3.974	180.1
7	007 ASTON MARTIN RACING	A. Meyrick / S. Mücke / H. Primat	Lola Aston Martin	LM P1	M	1:26.020	12	36	+4.021	180.0
8	24 OAK RACING	J. Nicolet / A. Premat / O. Pla	Oak Pescarolo - Judd	LM P1	D	1:26.324	13	37	+4.325	179.3
9	26 SIGNATECH NISSAN	F. Mailloux / L. Ordofiez / J. Vernay	Oreca 03 - Nissan	LM P2	D	1:30.309	7	40	+8.310	171.4
10	35 OAK RACING	P. Lafargue / F. Da Rocha	Oak Pescarolo - Judd	LM P2	D	1:32.820	36	40	+10.821	166.8
11	23 TOKAI UNIV YGK POWER	M. Shogo / Y. Naoki	Courage-Oreca LC70	LM P1	Y	1:34.042	8	11	+12.043	164.6
12	55 BMW MOTORSPORT	A. Farfus / J. Müller	BMW M3	LM GTE Pro	D	1:34.680	36	36	+12.681	163.5
13	56 BMW MOTORSPORT	A. Priaux / U. Alzen	BMW M3	LM GTE Pro	D	1:35.108	34	37	+13.109	162.8
14	59 LUXURY RACING	S. Ortelli / F. Makowiecki	Ferrari F458 Italia	LM GTE Pro	M	1:35.519	27	28	+13.520	162.1
15	57 KROHN RACING	T. Krohn / N. Jönsson / M. Rugolo	Ferrari F430	LM GTE Am	D	1:35.736	3	35	+13.737	161.7
16	90 PTRS RACING	W. Chen / Z. Shanqi	Formula Le Mans - Oreca - 09	FLM	M	1:35.814	4	6	+13.815	161.6
17	51 AF CORSE	G. Fisichella / G. Bruni	Ferrari F458 Italia	LM GTE Pro	M	1:35.968	23	37	+13.969	161.3
18	62 CRS RACING	P. Ehret / T. Mullen / R. Wills	Ferrari F430	LM GTE Am	M	1:36.178	5	36	+14.179	161.0
19	60 GULF AMR MIDDLE EAST	F. Giroix / R. Goethe	Aston Martin Vantage	LM GTE Am	D	1:36.362	3	32	+14.363	160.6
20	50 LARBRE COMPETITION	P. Bornhauser / J. Canal / O. Beretta	Corvette C6-ZR1	LM GTE Am	M	1:36.370	18	29	+14.371	160.6
21	63 PROTON COMPETITION	R. Lietz / C. Ried / G. Roda	Porsche 911 RSR (997)	LM GTE Am	M	1:36.455	5	7	+14.456	160.5
22	58 LUXURY RACING	A. Beltoise / D. Farnbacher / R. Firman	Ferrari F458 Italia	LM GTE Pro	M	1:36.631	35	36	+14.632	160.2
23	96 TEAM AMG	C. Cheng / L. Arnold / M. Häkkinen	Mercedes SLS AMG GT3	GTC	M	1:36.930	27	38	+14.931	159.7
24	61 AF CORSE	M. Cioci / P. Ma	Ferrari F430	LM GTE Am	M	1:37.130	18	26	+15.131	159.4
25	94 HITOTSUYAMA RACING	A. Tsuzuki / M. Kim / C. Van Dam	Audi R8 LMS	GTC	Y	1:37.167	14	38	+15.168	159.3
26	97 AUDI RACE EXPERIENCE	F. Gruber / J. Lee / H. Tak Mak	Audi R8 LMS	GTC	M	1:37.473	20	38	+15.474	158.8
27	98 AUDI SPORT C RACING	E. Mortara / D. O'Young / A. Imperatori	Audi R8 LMS	GTC	M	1:37.616	5	35	+15.617	158.6
28	65 LOTUS JETALLIANCE	J. Rossiter / J. Mowlam / D. Heinemeier	Lotus Evora	LM GTE Pro	M	1:38.154	15	23	+16.155	157.7
29	64 LOTUS JETALLIANCE	O. Slingerland / M. Rich / R. Rasmussen	Lotus Evora	LM GTE Pro	M	1:39.147	10	29	+17.148	156.1

Fastest Lap	Lap 10	Stephane Sarrazin	1:21.999	188.8 Kph
--------------------	--------	-------------------	-----------------	-----------

Published at:

Track Status: **DRY**

Race Director:	Timekeeper:
-----------------------	--------------------



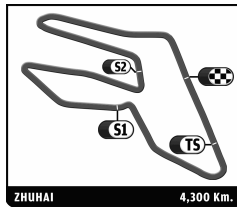
ILMC
6 HOURS OF ZHUHAI
 Free Practice 1
 Provisional Classification by Class

Nr.	Team	Drivers	Car	Ty	Time	Lap	Total	Gap	Kph
LM P1									
1	8 PEUGEOT SPORT TOTAL	F. Montagny / S. Sarrazin	Peugeot 908	M	1:21.999	10	46		188.8
2	7 PEUGEOT SPORT TOTAL	S. Bourdais / A. Davidson	Peugeot 908	M	1:22.495	19	53	+0.496	+0.496
3	2 AUDI SPORT TEAM JOEST	T. Kristensen / A. McNish	Audi R18 TDI	M	1:23.608	23	54	+1.609	+1.113
4	1 AUDI SPORT TEAM JOEST	T. Bernhard / M. Fassler	Audi R18 TDI	M	1:24.312	9	53	+2.313	+0.704
5	12 REBELLION RACING	N. Jani / N. Prost	Lola B10/60 Coupé - Toyota	M	1:25.533	28	33	+3.534	+1.221
6	15 OAK RACING	M. Lahaye / G. Moreau / P. Ragues	Oak Pescarolo - Judd	D	1:25.973	10	41	+3.974	+0.440
7	007 ASTON MARTIN RACING	A. Meyrick / S. Mücke / H. Primat	Lola Aston Martin	M	1:26.020	12	36	+4.021	+0.047
8	24 OAK RACING	J. Nicollet / A. Premat / O. Pla	Oak Pescarolo - Judd	D	1:26.324	13	37	+4.325	+0.304
9	23 TOKAI UNIV YGK POWER	M. Shogo / Y. Naoki	Courage-Oreca LC70	Y	1:34.042	8	11	+12.043	+7.718
LM P2									
1	26 SIGNATECH NISSAN	F. Maillieux / L. Ordóñez / J. Vernay	Oreca 03 - Nissan	D	1:30.309	7	40		171.4
2	35 OAK RACING	P. Lafargue / F. Da Rocha	Oak Pescarolo - Judd	D	1:32.820	36	40	+2.511	+2.511
LM GTE Pro									
1	55 BMW MOTORSPORT	A. Farfus / J. Müller	BMW M3	D	1:34.680	36	36		163.5
2	56 BMW MOTORSPORT	A. Priaux / U. Alzen	BMW M3	D	1:35.108	34	37	+0.428	+0.428
3	59 LUXURY RACING	S. Ortelli / F. Makowiecki	Ferrari F458 Italia	M	1:35.519	27	28	+0.839	+0.411
4	51 AF CORSE	G. Fisichella / G. Bruni	Ferrari F458 Italia	M	1:35.968	23	37	+1.288	+0.449
5	58 LUXURY RACING	A. Beltoise / D. Farnbacher / R. Firman	Ferrari F458 Italia	M	1:36.631	35	36	+1.951	+0.663
6	65 LOTUS JETALLIANCE	J. Rossiter / J. Mowlem / D. Heinemeier	Lotus Evora	M	1:38.154	15	23	+3.474	+1.523
7	64 LOTUS JETALLIANCE	O. Slingerland / M. Rich / R. Rasmussen	Lotus Evora	M	1:39.147	10	29	+4.467	+0.993
LM GTE Am									
1	57 KROHN RACING	T. Krohn / N. Jönsson / M. Rugolo	Ferrari F430	D	1:35.736	3	35		161.7
2	62 CRS RACING	P. Ehret / T. Mullen / R. Wills	Ferrari F430	M	1:36.178	5	36	+0.442	+0.442
3	60 GULF AMR MIDDLE EAST	F. Giroix / R. Goethe	Aston Martin Vantage	D	1:36.362	3	32	+0.626	+0.184
4	50 LARBRE COMPETITION	P. Bornhauser / J. Canal / O. Beretta	Corvette C6-ZR1	M	1:36.370	18	29	+0.634	+0.008
5	63 PROTON COMPETITION	R. Lietz / C. Ried / G. Roda	Porsche 911 RSR (997)	M	1:36.455	5	7	+0.719	+0.085
6	61 AF CORSE	M. Cioci / P. Ma	Ferrari F430	M	1:37.130	18	26	+1.394	+0.675
FLM									
1	90 PTRS RACING	W. Chen / Z. Shanqi	Formula Le Mans - Oreca - 09	M	1:35.814	4	6		161.6
GTC									
1	96 TEAM AMG	C. Cheng / L. Arnold / M. Häkkinen	Mercedes SLS AMG GT3	M	1:36.930	27	38		159.7
2	94 HITOTSUYAMA RACING	A. Tsuzuki / M. Kim / C. Van Dam	Audi R8 LMS	Y	1:37.167	14	38	+0.237	+0.237
3	97 AUDI RACE EXPERIENCE	F. Gruber / J. Lee / H. Tak Mak	Audi R8 LMS	M	1:37.473	20	38	+0.543	+0.306
4	98 AUDI SPORT C RACING	E. Mortara / D. O'Young / A. Imperatori	Audi R8 LMS	M	1:37.616	5	35	+0.686	+0.143

Published at:

Track Status: **DRY**

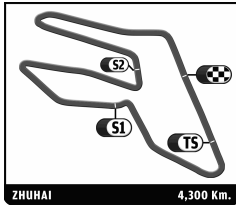
Race Director:	Timekeeper:
----------------	-------------



ILMC
6 HOURS OF ZHUHAI
Free Practice 1

Provisional Classification by Driver Fastest Lap

Nr	Team	Car	Class	Driver	Time	Lap	Total	Gap	Kph
1	8 PEUGEOT SPORT TOTAL	Peugeot 908	LM P1	Stephane Sarrazin	1:21.999	10	46		188.8
2	7 PEUGEOT SPORT TOTAL	Peugeot 908	LM P1	Sebastien Bourdais	1:22.495	19	46	0.496	187.6
3	2 AUDI SPORT TEAM JOEST	Audi R18 TDI	LM P1	Tom Kristensen	1:23.608	23	32	1.609	185.1
4	1 AUDI SPORT TEAM JOEST	Audi R18 TDI	LM P1	Marcel Fässler	1:24.312	9	31	2.313	183.6
5	7 PEUGEOT SPORT TOTAL	Peugeot 908	LM P1	Anthony Davidson	1:24.716	6	7	2.717	182.7
6	2 AUDI SPORT TEAM JOEST	Audi R18 TDI	LM P1	Allan McNish	1:24.808	21	22	2.809	182.5
7	12 REBELLION RACING	Lola B10/60 Coupé - Toyota	LM P1	Neel Jani	1:25.533	28	29	3.534	181.0
8	1 AUDI SPORT TEAM JOEST	Audi R18 TDI	LM P1	Timo Bernhard	1:25.728	15	22	3.729	180.6
9	15 OAK RACING	Oak Pescarolo - Judd	LM P1	Guillaume Moreau	1:25.973	10	24	3.974	180.1
10	007 ASTON MARTIN RACING	Lola Aston Martin	LM P1	Stefan Mücke	1:26.020	12	18	4.021	180.0
11	24 OAK RACING	Oak Pescarolo - Judd	LM P1	Alexandre Premat	1:26.324	13	15	4.325	179.3
12	24 OAK RACING	Oak Pescarolo - Judd	LM P1	Olivier Pla	1:26.792	5	7	4.793	178.4
13	007 ASTON MARTIN RACING	Lola Aston Martin	LM P1	Harold Primat	1:27.550	11	18	5.551	176.8
14	15 OAK RACING	Oak Pescarolo - Judd	LM P1	Mathieu Lahaye	1:27.800	6	7	5.801	176.3
15	15 OAK RACING	Oak Pescarolo - Judd	LM P1	Pierre Ragues	1:28.081	8	10	6.082	175.7
16	12 REBELLION RACING	Lola B10/60 Coupé - Toyota	LM P1	Nicolas Prost	1:28.217	3	4	6.218	175.5
17	24 OAK RACING	Oak Pescarolo - Judd	LM P1	Jacques Nicolet	1:28.955	4	15	6.956	174.0
18	26 SIGNATECH NISSAN	Oreca 03 - Nissan	LM P2	Lucas Ordoñez	1:30.309	7	25	8.310	171.4
19	26 SIGNATECH NISSAN	Oreca 03 - Nissan	LM P2	Jean-Karl Vernay	1:30.542	13	15	8.543	171.0
20	35 OAK RACING	Oak Pescarolo - Judd	LM P2	Patrica Lafargue	1:32.820	10	14	10.821	166.8
21	35 OAK RACING	Oak Pescarolo - Judd	LM P2	Frederic Da Rocha	1:32.885	7	26	10.886	166.7
22	23 TOKAI UNIV YGK POWER	Courage-Oreca LC70	LM P1	Mitsuyama Shogo	1:34.042	8	9	12.043	164.6
23	55 BMW MOTORSPORT	BMW M3	LM GTE Pro	Jörg Müller	1:34.680	17	17	12.681	163.5
24	56 BMW MOTORSPORT	BMW M3	LM GTE Pro	Andy Priaux	1:35.108	16	19	13.109	162.8
25	55 BMW MOTORSPORT	BMW M3	LM GTE Pro	Augusto Farfus	1:35.339	9	19	13.340	162.4
26	56 BMW MOTORSPORT	BMW M3	LM GTE Pro	Uwe Alzen	1:35.409	4	18	13.410	162.2
27	59 LUXURY RACING	Ferrari F458 Italia	LM GTE Pro	Frederic Makowiecki	1:35.519	13	14	13.520	162.1
28	57 KROHN RACING	Ferrari F430	LM GTE Am	Niclas Jönsson	1:35.736	3	21	13.737	161.7
29	00 PTRS RACING	Formula Le Mans - Oreca - 09	FLM	Wei Liang Chen	1:35.814	4	6	13.815	161.6
30	51 AF CORSE	Ferrari F458 Italia	LM GTE Pro	Giancarlo Fisichella	1:35.968	15	29	13.969	161.3
31	62 CRS RACING	Ferrari F430	LM GTE Am	Tim Mullen	1:36.178	5	8	14.179	161.0
32	59 LUXURY RACING	Ferrari F458 Italia	LM GTE Pro	Stephane Ortelli	1:36.232	9	14	14.233	160.9
33	60 GULF AMR MIDDLE EAST	Aston Martin Vantage	LM GTE Am	Fabien Giroix	1:36.362	3	7	14.363	160.6
34	50 LARBRE COMPETITION	Corvette C6-ZR1	LM GTE Am	Olivier Beretta	1:36.370	18	21	14.371	160.6
35	63 PROTON COMPETITION	Porsche 911 RSR (997)	LM GTE Am	Richard Lietz	1:36.455	5	7	14.456	160.5
36	58 LUXURY RACING	Ferrari F458 Italia	LM GTE Pro	Anthony Beltoise	1:36.631	12	13	14.632	160.2
37	58 LUXURY RACING	Ferrari F458 Italia	LM GTE Pro	Ralph Firman	1:36.685	11	12	14.686	160.1
38	51 AF CORSE	Ferrari F458 Italia	LM GTE Pro	Gianmaria Bruni	1:36.839	7	8	14.840	159.9
39	96 TEAM AMG	Mercedes SLS AMG GT3	GTC	Congfu Cheng	1:36.930	12	13	14.931	159.7
40	61 AF CORSE	Ferrari F430	LM GTE Am	Marco Cioci	1:37.130	18	20	15.131	159.4
41	96 TEAM AMG	Mercedes SLS AMG GT3	GTC	Lance David Arnold	1:37.131	9	10	15.132	159.4
42	96 TEAM AMG	Mercedes SLS AMG GT3	GTC	Mika Häkkinen	1:37.137	13	15	15.138	159.4
43	94 HITOTSUYAMA RACING	Audi R8 LMS	GTC	Carlo Van Dam	1:37.167	14	16	15.168	159.3
44	58 LUXURY RACING	Ferrari F458 Italia	LM GTE Pro	Dominik Farnbacher	1:37.189	6	11	15.190	159.3
45	97 AUDI RACE EXPERIENCE	Audi R8 LMS	GTC	Florian Gruber	1:37.473	20	25	15.474	158.8
46	98 AUDI SPORT C RACING	Audi R8 LMS	GTC	Darryl O'Young	1:37.616	5	12	15.617	158.6
47	50 LARBRE COMPETITION	Corvette C6-ZR1	LM GTE Am	Julien Canal	1:37.908	5	8	15.909	158.1
48	98 AUDI SPORT C RACING	Audi R8 LMS	GTC	Alexandre Imperatori	1:38.032	8	8	16.033	157.9
49	65 LOTUS JETALLIANCE	Lotus Evora	LM GTE Pro	James Rossiter	1:38.154	6	7	16.155	157.7
50	62 CRS RACING	Ferrari F430	LM GTE Am	Roger Wills	1:38.219	12	15	16.220	157.6
51	98 AUDI SPORT C RACING	Audi R8 LMS	GTC	Edoardo Mortara	1:38.374	13	15	16.375	157.4
52	65 LOTUS JETALLIANCE	Lotus Evora	LM GTE Pro	Johnny Mowlem	1:38.739	8	9	16.740	156.8
53	62 CRS RACING	Ferrari F430	LM GTE Am	Pierre Ehret	1:38.741	9	13	16.742	156.8
54	94 HITOTSUYAMA RACING	Audi R8 LMS	GTC	Akihiro Tsuzuki	1:39.052	13	14	17.053	156.3
55	64 LOTUS JETALLIANCE	Lotus Evora	LM GTE Pro	Martin Rich	1:39.147	10	12	17.148	156.1
56	65 LOTUS JETALLIANCE	Lotus Evora	LM GTE Pro	David Heinemeier	1:39.642	3	7	17.643	155.4
57	94 HITOTSUYAMA RACING	Audi R8 LMS	GTC	Michael Kim	1:39.759	7	8	17.760	155.2
58	60 GULF AMR MIDDLE EAST	Aston Martin Vantage	LM GTE Am	Road Goethe	1:39.900	4	25	17.901	155.0
59	57 KROHN RACING	Ferrari F430	LM GTE Am	Tracy Krohn	1:40.137	13	14	18.138	154.6
60	97 AUDI RACE EXPERIENCE	Audi R8 LMS	GTC	Hing Tak Mak	1:41.649	6	13	19.650	152.3
61	64 LOTUS JETALLIANCE	Lotus Evora	LM GTE Pro	Rene Rasmussen	1:42.745	5	5	20.746	150.7
62	61 AF CORSE	Ferrari F430	LM GTE Am	Philip Ma	1:43.105	6	6	21.106	150.1
63	64 LOTUS JETALLIANCE	Lotus Evora	LM GTE Pro	Oskar Slingerland	1:45.481	9	12	23.482	146.8
64	26 SIGNATECH NISSAN	Oreca 03 - Nissan	LM P2	Franck Mailleux					
65	50 LARBRE COMPETITION	Corvette C6-ZR1	LM GTE Am	Patrick Bornhauser					
66	23 TOKAI UNIV YGK POWER	Courage-Oreca LC70	LM P1	Yokomizo Naoki			2		
67	007 ASTON MARTIN RACING	Lola Aston Martin	LM P1	Andy Meyrick					
68	8 PEUGEOT SPORT TOTAL	Peugeot 908	LM P1	Franck Montagny					



ILMC
6 HOURS OF ZHUHAI
 Free Practice 1

Provisional Classification by Driver Fastest Lap

Nr	Team	Car	Class	Driver	Time	Lap	Total	Gap	Kph
69	90 PTRS RACING	Formula Le Mans - Oreca - 09	FLM	Zhang Shanqi					
70	97 AUDI RACE EXPERIENCE	Audi R8 LMS	GTC	Jeffrey Lee					
71	63 PROTON COMPETITION	Porsche 911 RSR (997)	LM GTE Am	Christian Ried					
72	57 KROHN RACING	Ferrari F430	LM GTE Am	Michele Rugolo					
73	63 PROTON COMPETITION	Porsche 911 RSR (997)	LM GTE Am	Gianluca Roda					

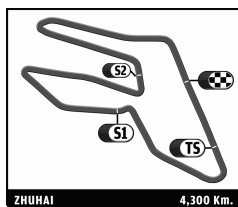
Published at:

Track Status:

DRY

Race Director:

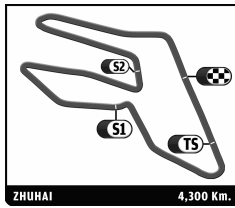
Timekeeper:



ILMC
6 HOURS OF ZHUHAI
Free Practice 1

Best Sector Times

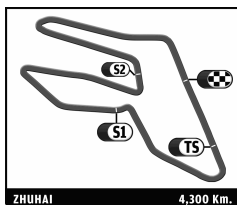
SECTOR 1			SECTOR 2			SECTOR 3			Pos	Team	Ideal Lap	Best Lap
Pos	Driver	Time	Driver	Time	Driver	Time	Pos	Team				
1	7 S.Bourdais	26.374	8 S.Sarrazin	26.386	8 S.Sarrazin	29.099	1	8 PEUGEOT SPORT TOTAL	1'21.999	1:21.999	(1)	
2	8 S.Sarrazin	26.514	7 S.Bourdais	26.627	7 S.Bourdais	29.274	2	7 PEUGEOT SPORT TOTAL	1'22.275	1:22.495	(2)	
3	2 T.Kristensen	26.981	2 T.Kristensen	26.672	2 T.Kristensen	29.711	3	2 AUDI SPORT TEAM JOEST	1'23.364	1:23.608	(3)	
4	1 M.Fässler	27.165	1 M.Fässler	27.000	1 M.Fässler	29.894	4	1 AUDI SPORT TEAM JOEST	1'24.059	1:24.312	(4)	
5	12 N.Jani	27.503	12 N.Jani	27.254	12 N.Jani	30.433	5	12 REBELLION RACING	1'25.190	1:25.533	(5)	
6	007 S.Mücke	27.788	007 S.Mücke	27.523	15 G.Moreau	30.495	6	24 OAK RACING	1'25.957	1:26.324	(8)	
7	24 A.Premat	27.831	15 G.Moreau	27.557	24 A.Premat	30.549	7	15 OAK RACING	1'25.973	1:25.973	(6)	
8	15 G.Moreau	27.921	24 A.Premat	27.577	007 S.Mücke	30.709	8	007 ASTON MARTIN RACING	1'26.020	1:26.020	(7)	
9	26 L.Ordoñez	29.051	26 J.Vernay	28.650	26 L.Ordoñez	32.186	9	26 SIGNATECH NISSAN	1'29.887	1:30.309	(9)	
10	35 F.Da Rocha	30.032	35 P.Lafargue	29.405	35 F.Da Rocha	33.046	10	35 OAK RACING	1'32.483	1:32.820	(10)	
11	55 J.Müller	30.606	23 M.Shogo	29.700	23 M.Shogo	33.172	11	23 TOKAI UNIV YGK POWER	1'34.042	1:34.042	(11)	
12	56 A.Priaulx	30.644	56 A.Priaulx	29.953	55 J.Müller	34.102	12	55 BMW MOTORSPORT	1'34.680	1:34.680	(12)	
13	57 N.Jönsson	30.841	55 J.Müller	29.972	56 A.Priaulx	34.118	13	56 BMW MOTORSPORT	1'34.715	1:35.108	(13)	
14	90 W.Chen	30.909	90 W.Chen	30.068	90 W.Chen	34.369	14	90 PTRS RACING	1'35.346	1:35.814	(16)	
15	59 F.Makowiecki	30.939	59 F.Makowiecki	30.145	59 F.Makowiecki	34.417	15	59 LUXURY RACING	1'35.501	1:35.519	(14)	
16	60 F.Giroix	30.984	57 N.Jönsson	30.158	51 G.Fisichella	34.515	16	57 KROHN RACING	1'35.575	1:35.736	(15)	
17	50 O.Beretta	30.988	62 T.Mullen	30.174	57 N.Jönsson	34.576	17	51 AF CORSE	1'35.844	1:35.968	(17)	
18	51 G.Fisichella	31.024	51 G.Fisichella	30.305	58 A.Beltoise	34.722	18	62 CRS RACING	1'35.952	1:36.178	(18)	
19	62 T.Mullen	31.039	60 F.Giroix	30.315	62 T.Mullen	34.739	19	50 LARBRE COMPETITION	1'36.287	1:36.370	(20)	
20	63 R.Lietz	31.039	50 O.Beretta	30.331	63 R.Lietz	34.836	20	58 LUXURY RACING	1'36.315	1:36.631	(22)	
21	96 C.Cheng	31.097	63 R.Lietz	30.445	50 O.Beretta	34.968	21	63 PROTON COMPETITION	1'36.320	1:36.455	(21)	
22	58 A.Beltoise	31.112	98 D.O'Young	30.467	96 C.Cheng	35.004	22	60 GULF AMR MIDDLE EAST	1'36.346	1:36.362	(19)	
23	61 M.Cioci	31.149	97 F.Gruber	30.478	94 C.Van Dam	35.017	23	96 TEAM AMG	1'36.607	1:36.930	(23)	
24	98 D.O'Young	31.160	58 A.Beltoise	30.481	60 F.Giroix	35.047	24	98 AUDI SPORT C RACING	1'37.033	1:37.616	(27)	
25	23 M.Shogo	31.170	96 C.Cheng	30.506	61 M.Cioci	35.078	25	61 AF CORSE	1'37.067	1:37.130	(24)	
26	97 F.Gruber	31.411	94 C.Van Dam	30.672	98 A.Imperatori	35.406	26	94 HITOTSUYAMA RACING	1'37.167	1:37.167	(25)	
27	94 C.Van Dam	31.478	61 M.Cioci	30.840	97 F.Gruber	35.475	27	97 AUDI RACE EXPERIENCE	1'37.364	1:37.473	(26)	
28	65 J.Rossiter	31.588	65 J.Rossiter	30.879	65 J.Rossiter	35.590	28	65 LOTUS JETALLIANCE	1'38.057	1:38.154	(28)	
29	64 M.Rich	32.097	64 M.Rich	31.172	64 M.Rich	35.761	29	64 LOTUS JETALLIANCE	1'39.030	1:39.147	(29)	



ILMC
6 HOURS OF ZHUHAI
 Free Practice 1

Best Top Speeds

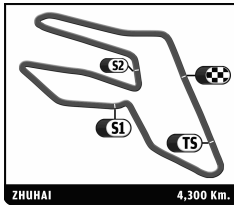
Team	Car	Class	Top Speed Driver	Top 1		Top 2		Top 3		Top 4		Top 5		Avg
				Kph	Lap	Kph	Lap	Kph	Lap	Kph	Lap	Kph	Lap	
7 PEUGEOT SPORT TOTAL	Peugeot 908	LM P1	S. Bourdais	278.4	18	276.9	19	276.9	20	276.9	22	276.2	6	277,1
1 AUDI SPORT TEAM JOEST	Audi R18 TDI	LM P1	M. Fässler	277.6	16	276.9	25	276.9	19	276.2	20	276.2	53	276,8
8 PEUGEOT SPORT TOTAL	Peugeot 908	LM P1	S. Sarrazin	277.6	11	277.6	27	277.6	18	277.6	7	276.9	21	277,5
2 AUDI SPORT TEAM JOEST	Audi R18 TDI	LM P1	T. Kristensen	277.6	24	276.9	53	276.9	20	276.9	14	276.9	5	277,0
12 REBELLION RACING	Lola B10/60 Coupé - Toyota	LM P1	N. Jani	266.0	4	265.4	27	265.4	18	265.4	26	264.7	12	265,4
007 ASTON MARTIN RACING	Lola Aston Martin	LM P1	H. Primat	266.0	25	265.4	36	265.4	14	264.7	13	264.7	12	265,2
24 OAK RACING	Oak Pescarolo - Judd	LM P1	O. Pla	263.4	37	262.1	36	262.1	9	261.5	8	261.5	13	262,1
15 OAK RACING	Oak Pescarolo - Judd	LM P1	G. Moreau	263.4	14	263.4	8	262.8	11	262.8	16	262.8	7	263,0
26 SIGNATECH NISSAN	Oreca 03 - Nissan	LM P2	L. Ordóñez	255.3	22	255.3	23	254.1	20	254.1	19	254.1	21	254,6
35 OAK RACING	Oak Pescarolo - Judd	LM P2	F. Da Rocha	251.2	7	250.6	8	250.6	9	250.6	6	250.0	11	250,6
96 TEAM AMG	Mercedes SLS AMG GT3	GTC	L. Arnold	244.9	38	244.9	34	243.8	21	243.2	27	243.2	20	244,0
90 PTRS RACING	Formula Le Mans - Oreca - 09	FLM	W. Chen	244.3	4	242.7	5	242.7	6	242.2	3	234.3	2	241,2
56 BMW MOTORSPORT	BMW M3	LM GTE Pro	U. Alzen	243.8	6	241.6	15	241.6	5	241.1	37	241.1	14	241,8
55 BMW MOTORSPORT	BMW M3	LM GTE Pro	A. Farfus	243.8	4	243.8	5	243.2	6	242.7	9	241.6	36	243,0
57 KROHN RACING	Ferrari F430	LM GTE Am	N. Jönsson	243.8	4	241.1	3	240.0	7	239.5	11	238.9	18	240,7
23 TOKAI UNIV YGK POWER	Courage-Oreca LC70	LM P1	M. Shogo	242.7	8	187.5	9	180.9	4	178.8	7	166.9	5	191,4
97 AUDI RACE EXPERIENCE	Audi R8 LMS	GTC	F. Gruber	241.1	4	240.5	5	239.5	20	239.5	19	238.9	12	239,9
50 LARBRE COMPETITION	Corvette C6-ZR1	LM GTE Am	O. Beretta	241.1	14	238.9	19	238.9	6	238.9	4	238.9	25	239,3
98 AUDI SPORT C RACING	Audi R8 LMS	GTC	D. O'Young	240.0	7	239.5	2	237.4	5	236.3	35	236.3	20	237,9
58 LUXURY RACING	Ferrari F458 Italia	LM GTE Pro	D. Farnbacher	239.5	21	239.5	9	238.9	22	237.9	10	237.9	5	238,7
60 GULF AMR MIDDLE EAST	Aston Martin Vantage	LM GTE Am	F. Giroix	239.5	5	237.4	3	237.4	4	236.8	14	233.8	2	237,0
59 LUXURY RACING	Ferrari F458 Italia	LM GTE Pro	S. Ortelli	238.9	4	237.9	28	237.9	3	237.9	5	237.4	14	238,0
63 PROTON COMPETITION	Porsche 911 RSR (997)	LM GTE Am	R. Lietz	238.4	5	238.4	7	237.9	6	224.1	4	206.9	3	229,1
51 AF CORSE	Ferrari F458 Italia	LM GTE Pro	G. Fisichella	238.4	24	238.4	34	237.9	7	237.4	4	236.8	13	237,8
62 CRS RACING	Ferrari F430	LM GTE Am	T. Mullen	237.4	2	236.3	7	235.8	27	234.8	32	234.3	36	235,7
61 AF CORSE	Ferrari F430	LM GTE Am	M. Cioci	236.8	19	234.3	18	229.3	17	227.8	16	225.5	8	230,7
65 LOTUS JETALLIANCE	Lotus Evora	LM GTE Pro	J. Rossiter	235.3	13	234.3	14	234.3	15	233.3	8	232.3	11	233,9
94 HITOTSUYAMA RACING	Audi R8 LMS	GTC	C. Van Dam	235.3	15	234.3	38	234.3	5	233.8	33	233.8	14	234,3
64 LOTUS JETALLIANCE	Lotus Evora	LM GTE Pro	M. Rich	233.8	8	233.8	5	233.3	3	231.8	11	231.8	7	232,9



ILMC
6 HOURS OF ZHUHAI
 Free Practice 1

Fastest Lap Sequence

Practice Time	Team	Car	Class	Driver	Time	Kph	Lap
3:09.980	8 PEUGEOT SPORT TOTAL	Peugeot 908	LM P1	Stephane Sarrazin	1:30.159	171.7	2
3:13.036	7 PEUGEOT SPORT TOTAL	Peugeot 908	LM P1	Sebastien Bourdais	1:27.805	176.3	2
3:36.507	2 AUDI SPORT TEAM JOEST	Audi R18 TDI	LM P1	Tom Kristensen	1:27.025	177.9	2
4:35.249	8 PEUGEOT SPORT TOTAL	Peugeot 908	LM P1	Stephane Sarrazin	1:25.269	181.5	3
5:01.607	2 AUDI SPORT TEAM JOEST	Audi R18 TDI	LM P1	Tom Kristensen	1:25.100	181.9	3
5:59.223	8 PEUGEOT SPORT TOTAL	Peugeot 908	LM P1	Stephane Sarrazin	1:23.974	184.3	4
7:27.030	7 PEUGEOT SPORT TOTAL	Peugeot 908	LM P1	Sebastien Bourdais	1:23.354	185.7	5
8:50.284	7 PEUGEOT SPORT TOTAL	Peugeot 908	LM P1	Sebastien Bourdais	1:23.254	185.9	6
15:58.683	7 PEUGEOT SPORT TOTAL	Peugeot 908	LM P1	Sebastien Bourdais	1:23.002	186.5	10
17:36.729	8 PEUGEOT SPORT TOTAL	Peugeot 908	LM P1	Stephane Sarrazin	1:21.999	188.8	10



ILMC

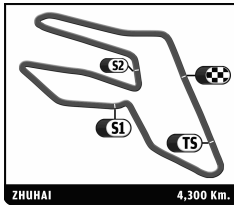
6 HOURS OF ZHUHAI

Free Practice 1

Sector Analysis

■ Personal Best
 ■ Session Best
 ■ Crossing the finish line in pit lane

Lap	D	Time	Sector 1	Sector 2	Sector 3	T. Spd	Elapsed	Lap	D	Time	Sector 1	Sector 2	Sector 3	T. Spd	Elapsed
1 AUDI SPORT TEAM JOEST Audi R18 TDI LM P1 1.Timo Bernhard 2.Marcel Fässler								2 AUDI SPORT TEAM JOEST Audi R18 TDI LM P1 1.Tom Kristensen 2.Allan McNish							
1	2	2:04.698	1:01.195	30.530	32.973	161.4	2:04.698	1	1	2:09.482	1:03.305	32.466	33.711	152.8	2:09.482
2	2	1:28.141	28.176	28.241	31.724	266.7	3:32.839	2	1	1:27.025	28.607	27.139	31.279	264.7	3:36.507
3	2	1:27.305	28.568	27.800	30.937	270.7	5:00.144	3	1	1:25.100	27.779	27.302	30.019	266.7	5:01.607
4	2	1:26.005	27.427	27.286	31.292	273.4	6:26.149	4	1	1:24.872	26.981	26.903	30.988	274.1	6:26.479
5	2	1:26.557	27.837	28.012	30.708	274.1	7:52.706	5	1	1:25.617	27.758	27.379	30.480	276.9	7:52.096
6	2	1:25.114	27.623	27.250	30.241	275.5	9:17.820	6	1	1:23.858	27.005	26.672	30.181	274.8	9:15.954
7	2	1:24.871	27.657	27.031	30.183	274.1	10:42.691	7	1	1:24.013	27.134	26.966	29.913	272.0	10:39.967
8	2	1:25.302	28.204	27.009	30.089	274.1	12:07.993	8	1	1:23.973	27.155	26.814	30.004	274.8	12:03.940
9	2	1:24.312	27.385	27.033	29.894	275.5	13:32.305	9	1	1:24.138	27.210	26.757	30.171	272.7	13:28.078
10	2	1:24.453	27.165	27.053	30.235	276.2	14:56.758	10	1	1:25.041	27.357	27.349	30.335	274.1	14:53.119
11	2	1:25.177	27.355	27.065	30.757	275.5	16:21.935	11	1	1:26.264	27.274	27.217	31.773	274.8	16:19.383
12	2	1:25.096	27.486	27.383	30.227	275.5	17:47.031	12	1	1:24.200	27.283	26.869	30.048	274.8	17:43.583
13	2	1:24.927	27.703	27.137	30.087	274.1	19:11.958	13	1	1:24.061	27.073	26.833	30.155	276.2	19:07.644
14	2	1:24.778	27.318	27.013	30.447	273.4	20:36.736	14	1	1:25.735	27.151	26.911	31.673	276.9	20:33.379
15	2	1:25.172	27.742	27.190	30.240	276.2	22:01.908	15	1	1:25.543	27.745	27.395	30.403	273.4	21:58.922
16	2	1:24.440	27.200	27.145	30.095	277.6	23:26.348	16	1	1:23.844	27.221	26.912	29.711	275.5	23:22.766
17	2	1:24.708	27.226	27.348	30.134	275.5	24:51.056	17	1	1:23.898	27.019	26.990	29.889	274.8	24:46.664
18	2	1:24.432	27.285	27.000	30.147	275.5	26:15.488	18	1	1:23.842	27.268	26.859	29.715	273.4	26:10.506
19	2	1:25.318	27.355	27.131	30.832	276.9	27:40.806	19	1	1:24.474	27.462	27.062	29.950	276.9	27:34.980
20	2	1:26.152	27.488	27.645	31.019	276.2	29:06.958	20	1	1:26.464	27.664	27.415	31.385	276.9	29:01.444
21	2	1:28.584	30.387	27.302	30.895	274.8	30:35.542	21	1	1:25.270	28.211	27.056	30.003	273.4	30:26.714
22	2	1:25.256	27.608	27.282	30.366	273.4	32:00.798	22	1	1:24.140	27.193	26.888	30.059	275.5	31:50.854
23	2	1:25.149	27.601	27.151	30.397	274.1	33:25.947	23	1	1:23.608	27.133	26.757	29.718	275.5	33:14.462
24	2	1:26.935	28.601	27.399	30.935	273.4	34:52.882	24	1	1:24.900	27.898	27.008	29.994	277.6	34:39.362
25	2	1:25.880	27.677	27.233	30.970	276.9	36:18.762	25	1	1:24.397	27.185	27.118	30.094	274.8	36:03.759
26	2	1:25.310	27.585	27.300	30.425	274.1	37:44.072	26	1	1:25.365	27.881	27.144	30.340	274.8	37:29.124
27	2	1:25.604	27.646	27.298	30.660	275.5	39:09.676	27	1	1:24.951	27.273	26.992	30.686	275.5	38:54.075
28	2	1:25.450	27.558	27.098	30.794	275.5	40:35.126	28	1	1:26.046	28.167	27.414	30.465	274.1	40:20.121
29	2	1:25.770	27.452	27.242	31.076	275.5	42:00.896	29	1	1:25.161	27.373	27.407	30.381	274.8	41:45.282
30	2	1:27.349	27.782	28.466	31.101	272.7	43:28.245	30	1	1:24.753	27.264	26.904	30.585	275.5	43:10.035
31	2	1:33.354 B	27.730	27.381	38.243	274.1	45:01.599	31	1	1:25.212	27.395	27.248	30.569	275.5	44:35.247
32	1	3:00.270	1:57.745	29.611	32.914	190.5	48:01.869	32	1	1:33.692 B	27.399	29.204	37.089	275.5	46:08.939
33	1	1:29.073	29.149	28.416	31.508	254.7	49:30.942	33	2	2:57.912	1:58.416	28.266	31.230	198.2	49:06.851
34	1	1:28.188	28.230	28.441	31.517	268.7	50:59.130	34	2	1:29.275	28.607	28.428	32.240	270.7	50:36.126
35	1	1:28.499	28.792	27.781	31.926	257.1	52:27.629	35	2	1:26.652	27.879	27.843	30.930	272.0	52:02.778
36	1	1:39.826 B	28.336	28.688	42.802	268.7	54:07.455	36	2	1:32.724 B	27.745	27.532	37.447	273.4	53:35.502
37	1	8:59.112	7:57.158	29.082	32.872	194.9	1:03:06.567	37	2	9:25.962	8:26.413	28.407	31.142	196.4	1:03:01.464
38	1	1:28.572	28.557	28.401	31.614	251.7	1:04:35.139	38	2	1:26.381	27.818	27.751	30.812	271.4	1:04:27.845
39	1	1:27.371	28.176	27.785	31.410	270.7	1:06:02.510	39	2	1:26.201	27.889	27.658	30.654	272.0	1:05:54.046
40	1	1:26.947	28.009	27.762	31.176	271.4	1:07:29.457	40	2	1:26.296	27.815	27.620	30.861	273.4	1:07:20.342
41	1	1:28.160	28.465	28.146	31.549	255.3	1:08:57.617	41	2	1:25.517	27.659	27.396	30.462	271.4	1:08:45.859
42	1	1:26.869	27.723	27.637	31.509	274.1	1:10:24.486	42	2	1:25.482	27.625	27.455	30.402	276.2	1:10:11.341
43	1	1:26.605	27.910	27.672	31.023	272.0	1:11:51.091	43	2	1:25.949	27.643	27.461	30.845	276.2	1:11:37.290
44	1	1:26.414	27.895	27.539	30.980	273.4	1:13:17.505	44	2	1:25.899	27.842	27.394	30.663	272.7	1:13:03.189
45	1	1:26.780	27.927	27.902	30.951	275.5	1:14:44.285	45	2	1:25.949	27.692	27.386	30.871	273.4	1:14:29.138
46	1	1:25.728	27.708	27.408	30.612	272.7	1:16:10.013	46	2	1:25.394	27.693	27.241	30.460	273.4	1:15:54.532
47	1	1:26.143	27.571	27.359	31.213	274.1	1:17:36.156	47	2	1:27.359	27.449	27.503	32.407	276.2	1:17:21.891
48	1	1:26.444	27.963	27.513	30.968	268.7	1:19:02.600	48	2	1:25.975	27.553	27.429	30.993	273.4	1:18:47.866
49	1	1:26.179	27.650	27.501	31.028	272.0	1:20:28.779	49	2	1:27.379	29.397	27.493	30.489	261.5	1:20:15.245
50	1	1:26.818	28.210	27.488	31.120	270.0	1:21:55.597	50	2	1:25.744	27.514	27.508	30.722	274.8	1:21:40.989
51	1	1:27.537	27.737	28.142	31.658	274.1	1:23:23.134	51	2	1:24.998	27.379	27.390	30.229	274.8	1:23:05.987
52	1	1:26.152	27.851	27.401	30.900	273.4	1:24:49.286	52	2	1:26.371	27.513	28.056	30.802	275.5	1:24:32.358
53	1	1:27.031	28.163	27.776	31.092	276.2	1:26:16.317	53	2	1:24.808	27.463	27.241	30.104	276.9	1:25:57.166
								54	2	1:42.304 B	27.943	27.670	46.691	255.3	1:27:39.470

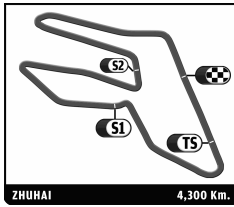


ILMC 6 HOURS OF ZHUHAI

Free Practice 1

Sector Analysis

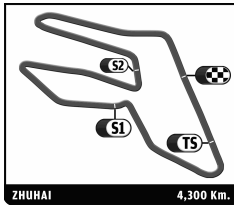
								■ Personal Best ■ Session Best ■ Crossing the finish line in pit lane							
Lap	D	Time	Sector 1	Sector 2	Sector 3	T. Spd	Elapsed	Lap	D	Time	Sector 1	Sector 2	Sector 3	T. Spd	Elapsed
007 ASTON MARTIN RACING 1. Andy Meyrick 2. Stefan Mücke 3. Harold Primat Lola Aston Martin LM P1															
1	2	1:43.588	39.655	30.412	33.521	165.6	1:43.588	16	1	1:30.851 B	27.195	26.987	36.669	272.7	24:29.789
2	2	1:31.328	29.617	29.396	32.315	241.6	3:14.916	17	1	2:27.309	1:22.669	28.035	36.605	197.8	26:57.098
3	2	1:28.695	28.719	28.228	31.748	250.0	4:43.611	18	1	1:23.509	26.374	27.853	29.282	278.4	28:20.607
4	2	1:27.396	28.274	27.860	31.262	257.8	6:11.007	19	1	1:22.495	26.594	26.627	29.274	276.9	29:43.102
5	2	4:49.660 B			1:31.477	260.2	11:00.667	20	1	1:23.075	26.592	26.805	29.678	276.9	31:06.177
6	2	13:06.750	...	29.153	32.248	185.2	24:07.417	21	1	1:25.012	28.004	27.212	29.796	276.2	32:31.189
7	2	1:28.509	28.831	28.094	31.584	254.7	25:35.926	22	1	1:23.851	27.098	27.025	29.728	276.9	33:55.040
8	2	1:29.328	29.155	28.381	31.792	251.7	27:05.254	23	1	1:24.214	27.391	27.179	29.644	275.5	35:19.254
9	2	1:27.061	28.086	27.685	31.290	260.2	28:32.315	24	1	1:24.017	27.126	27.038	29.853	275.5	36:43.271
10	2	1:26.571	28.054	27.618	30.899	260.2	29:58.886	25	1	1:25.299	27.314	26.983	31.002	275.5	38:08.570
11	2	1:26.612	27.793	27.867	30.952	264.7	31:25.498	26	1	1:24.886	27.510	27.264	30.112	266.0	39:33.456
12	2	1:26.020	27.788	27.523	30.709	264.7	32:51.518	27	1	1:24.570	27.296	27.223	30.051	273.4	40:58.026
13	2	1:28.306	29.238	27.802	31.266	264.7	34:19.824	28	1	1:25.692	27.492	27.512	30.688	259.0	42:23.718
14	2	1:35.890 B	29.052	27.952	38.886	265.4	35:55.714	29	1	1:25.141	27.373	27.390	30.378	255.3	43:48.859
15	2	13:18.976	...	29.907	32.429	156.1	49:14.690	30	1	1:25.083	27.495	27.154	30.434	258.4	45:13.942
16	2	1:27.963	28.521	28.183	31.259	259.0	50:42.653	31	1	1:25.648	27.666	27.436	30.546	257.1	46:39.590
17	2	1:28.134	28.504	27.955	31.675	260.2	52:10.787	32	1	1:27.032	27.913	27.983	31.136	255.9	48:06.622
18	2	1:38.153 B	28.868	28.430	40.855	264.1	53:48.940	33	1	1:27.493	29.673	27.439	30.381	252.3	49:34.115
19	3	8:02.327	6:57.737	30.284	34.306	134.0	1:01:51.267	34	1	1:26.744	27.648	27.607	31.489	256.5	51:00.859
20	3	1:31.502	29.598	28.746	33.158	254.7	1:03:22.769	35	1	1:25.796	27.899	27.491	30.406	264.7	52:26.655
21	3	1:30.119	28.984	28.700	32.435	261.5	1:04:52.888	36	1	1:34.169 B	27.913	28.102	38.154	259.0	54:00.824
22	3	1:29.757	28.683	29.057	32.017	260.2	1:06:22.645	37	1	7:44.266	6:38.386	31.417	34.463	168.0	1:01:45.090
23	3	1:29.143	28.664	28.097	32.382	262.1	1:07:51.788	38	1	1:25.509	27.675	27.385	30.449	272.7	1:03:10.599
24	3	1:28.471	28.597	28.253	31.621	264.1	1:09:20.259	39	1	1:25.448	27.438	27.606	30.404	257.1	1:04:36.047
25	3	1:28.142	28.486	27.930	31.726	266.0	1:10:48.401	40	1	1:25.765	27.631	27.782	30.352	268.7	1:06:01.812
26	3	1:28.006	28.591	27.927	31.488	263.4	1:12:16.407	41	1	1:25.703	27.359	27.339	31.005	272.0	1:07:27.515
27	3	1:27.981	28.501	27.926	31.554	264.1	1:13:44.388	42	1	1:26.204	27.933	27.862	30.409	275.5	1:08:53.719
28	3	1:27.912	28.498	27.995	31.419	262.1	1:15:12.300	43	1	1:26.931	27.912	28.152	30.867	272.7	1:10:20.650
29	3	1:27.550	28.469	27.705	31.376	261.5	1:16:39.850	44	1	1:27.033	27.769	27.629	31.635	270.7	1:11:47.683
30	3	1:27.730	28.241	27.911	31.578	263.4	1:18:07.580	45	1	1:26.429	27.681	27.593	31.155	272.7	1:13:14.112
31	3	1:27.800	28.336	27.909	31.555	264.1	1:19:35.380	46	1	1:34.279 B	28.742	27.728	37.809	270.0	1:14:48.391
32	3	1:27.774	28.282	27.786	31.706	261.5	1:21:03.154	47	2	3:08.828	2:03.333	33.381	32.114	195.3	1:17:57.219
33	3	1:37.369	28.374	36.962	32.033	263.4	1:22:40.523	48	2	1:25.700	28.097	27.103	30.500	267.3	1:19:22.919
34	3	1:28.068	28.540	27.730	31.798	264.1	1:24:08.591	49	2	1:25.338	27.145	28.030	30.163	274.8	1:20:48.257
35	3	1:28.108	28.356	27.977	31.775	264.7	1:25:36.699	50	2	1:26.002	27.818	27.408	30.776	272.0	1:22:14.259
36	3	1:36.307 B	28.042	27.858	40.407	265.4	1:27:13.006	51	2	1:25.516	27.645	27.480	30.391	274.8	1:23:39.775
								52	2	1:24.716	27.412	27.114	30.190	273.4	1:25:04.491
								53	2	1:25.412	27.497	27.328	30.587	274.8	1:26:29.903
7 PEUGEOT SPORT TOTAL 1. Sebastien Bourdais 2. Anthony Davidson Peugeot 908 LM P1															
1	1	1:45.231	41.118	30.596	33.517	161.4	1:45.231	1	2	1:39.821	37.175	29.804	32.842	163.4	1:39.821
2	1	1:27.805	28.509	28.591	30.705	251.7	3:13.036	2	2	1:30.159	29.556	28.781	31.822	241.6	3:09.980
3	1	1:26.374	28.526	27.515	30.333	266.7	4:39.410	3	2	1:25.269	28.215	27.116	29.938	253.5	4:35.249
4	1	1:24.266	27.239	27.309	29.718	276.2	6:03.676	4	2	1:23.974	27.361	26.944	29.669	276.2	5:59.223
5	1	1:23.354	26.890	27.102	29.362	274.8	7:27.030	5	2	1:24.234	27.634	26.758	29.842	262.1	7:23.457
6	1	1:23.254	26.757	26.873	29.624	276.2	8:50.284	6	2	1:24.410	26.983	27.031	30.396	276.2	8:47.867
7	1	1:26.778	27.732	27.471	31.575	275.5	10:17.062	7	2	1:26.597	27.143	27.064	32.390	277.6	10:14.464
8	1	1:31.987 B	28.024	27.078	36.885	269.3	11:49.049	8	2	1:31.012 B	27.046	27.080	36.886	276.2	11:45.476
9	1	2:46.632	1:45.331	27.475	33.826	195.3	14:35.681	9	2	4:29.254	3:31.708	27.546	30.000	163.6	16:14.730
10	1	1:23.002	26.525	26.682	29.795	276.2	15:58.683	10	2	1:21.999	26.514	26.386	29.099	275.5	17:36.729
11	1	1:23.962	27.430	26.992	29.540	275.5	17:22.645	11	2	1:23.776	27.549	26.771	29.456	277.6	19:00.505
12	1	1:25.659	26.857	27.928	30.874	275.5	18:48.304	12	2	1:25.429	28.001	27.438	29.990	275.5	20:25.934
13	1	1:23.716	27.574	26.825	29.317	270.7	20:12.020	13	2	1:25.589	27.143	28.377	30.669	275.5	21:51.523
14	1	1:23.045	26.757	26.775	29.513	275.5	21:35.065	14	2	1:23.946	27.020	26.978	29.948	276.2	23:15.469
15	1	1:23.873	27.088	26.890	29.895	274.8	22:58.938	15	2	1:24.976	28.252	26.987	29.737	276.2	24:40.445
								16	2	1:32.490 B	27.950	27.395	37.145	275.5	26:12.935
8 PEUGEOT SPORT TOTAL 1. Franck Montagny 2. Stephane Sarrazin Peugeot 908 LM P1															
1	2	1:39.821	37.175	29.804	32.842	163.4	1:39.821	1	2	1:39.821	37.175	29.804	32.842	163.4	1:39.821
2	2	1:30.159	29.556	28.781	31.822	241.6	3:09.980	2	2	1:30.159	29.556	28.781	31.822	241.6	3:09.980
3	2	1:25.269	28.215	27.116	29.938	253.5	4:35.249	3	2	1:25.269	28.215	27.116	29.938	253.5	4:35.249
4	2	1:23.974	27.361	26.944	29.669	276.2	5:59.223	4	2	1:23.974	27.361	26.944	29.669	276.2	5:59.223
5	2	1:24.234	27.634	26.758	29.842	262.1	7:23.457	5	2	1:24.234	27.634	26.758	29.842	262.1	7:23.457
6	2	1:24.410	26.983	27.031	30.396	276.2	8:47.867	6	2	1:24.410	26.983	27.031	30.396	276.2	8:47.867
7	2	1:26.597	27.143	27.064	32.390	277.6	10:14.464	7	2	1:26.597	27.143	27.064	32.390	277.6	10:14.464
8	2	1:31.012 B	27.046	27.080	36.886	276.2	11:45.476	8	2	1:31.012 B	27.046	27.080	36.886	276.2	11:45.476
9	2	4:29.254	3:31.708	27.546	30.000	163.6	16:14.730	9	2	4:29.254	3:31.708	27.546	30.000	163.6	16:14.730
10	2	1:21.999	26.514	26.386	29.099	275.5	17:36.729	10	2	1:21.999	26.514	26.386	29.099	275.5	17:36.729
11	2	1:23.776	27.549	26.771	29.456	277.6	19:00.505	11	2	1:23.776	27.549	26.771	29.456	277.6	19:00.505
12	2	1:25.429	28.001	27.438	29.990	275.5	20:25.934	12	2	1:25.429	28.001	27.438	29.990	275.5	20:25.934
13	2	1:25.589	27.143	28.377	30.669	275.5	21:51.523	13	2	1:25.589	27.143	28.377	30.669	275.5	21:51.523
14	2	1:23.946	27.020	26.978	29.948	276.2	23:15.469	14	2	1:23.946	27.020	26.978	29.948	276.2	23:15.469
15	2	1:24.976													



ILMC
6 HOURS OF ZHUHAI
Free Practice 1

Sector Analysis

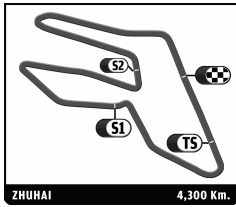
								■ Personal Best ■ Session Best ■ Crossing the finish line in pit lane																							
Lap	D	Time	Sector 1	Sector 2	Sector 3	T. Spd	Elapsed	Lap	D	Time	Sector 1	Sector 2	Sector 3	T. Spd	Elapsed																
17	2	2:26.505	1:28.272	27.993	30.240	194.9	28:39.440	25	1	8:01.112	7:02.752	27.866	30.494	189.8	1:13:00.845																
18	2	1:23.345	26.976	26.732	29.637	277.6	30:02.785	26	1	1:26.513	27.619	27.847	31.047	265.4	1:14:27.358																
19	2	1:24.210	26.874	27.408	29.928	275.5	31:26.995	27	1	1:26.112	27.684	27.254	31.174	265.4	1:15:53.470																
20	2	1:24.839	27.097	27.223	30.519	276.9	32:51.834	28	1	1:25.533	27.716	27.384	30.433	262.8	1:17:19.003																
21	2	1:25.409	28.140	27.059	30.210	276.9	34:17.243	29	1	1:32.911 B	27.503	27.367	38.041	264.7	1:18:51.914																
22	2	1:24.997	27.334	27.046	30.617	274.1	35:42.240	30	2	3:21.638	2:19.132	29.179	33.327	185.2	1:22:13.552																
23	2	1:24.909	27.423	26.996	30.490	276.2	37:07.149	31	2	1:29.893	29.501	28.504	31.888	257.8	1:23:43.445																
24	2	1:24.348	27.507	27.130	29.711	273.4	38:31.497	32	2	1:28.217	28.387	28.212	31.618	264.7	1:25:11.662																
25	2	1:24.539	27.154	26.875	30.510	276.2	39:56.036	33	2	1:28.603	28.577	28.048	31.978	263.4	1:26:40.265																
26	2	1:24.474	27.418	27.271	29.785	274.1	41:20.510	<div style="border: 1px solid black; padding: 5px;"> <p>15 OAK RACING Oak Pescarolo - Judd LM P1</p> <p>1. Matthieu Lahaye 3. Pierre Ragues</p> <p>2. Guillaume Moreau</p> </div>																							
27	2	1:25.333	27.828	27.118	30.387	277.6	42:45.843																								
28	2	1:25.049	27.250	27.471	30.328	276.2	44:10.892																								
29	2	1:24.221	27.459	26.987	29.775	267.3	45:35.113																								
30	2	1:24.541	27.151	27.006	30.384	276.9	46:59.654																								
31	2	1:24.494	27.198	27.190	30.106	273.4	48:24.148																								
32	2	1:24.595	27.243	26.981	30.371	276.2	49:48.743																								
33	2	1:24.675	27.552	27.116	30.007	274.1	51:13.418																								
34	2	1:25.112	27.113	27.033	30.966	276.2	52:38.530																								
35	2	5:42.202 B	29.195	28.685	4:44.322	262.1	58:20.732																								
36	2	10:55.926	9:56.011	28.483	31.432	182.7	1:09:16.658																								
37	2	1:27.195	28.057	28.040	31.098	268.0	1:10:43.853																								
38	2	1:25.724	27.679	27.170	30.875	272.0	1:12:09.577																								
39	2	1:25.135	27.604	27.272	30.259	266.7	1:13:34.712																								
40	2	1:25.835	28.396	27.285	30.154	275.5	1:15:00.547																								
41	2	1:26.125	27.502	27.871	30.752	274.8	1:16:26.672																								
42	2	1:24.825	27.471	27.291	30.063	273.4	1:17:51.497																								
43	2	1:25.038	27.246	26.949	30.843	275.5	1:19:16.535																								
44	2	1:25.772	27.328	27.101	31.343	274.1	1:20:42.307																								
45	2	1:35.037 B	29.004	28.184	37.849	272.7	1:22:17.344																								
46	2	4:39.287	3:40.601	27.748	30.938	182.4	1:26:56.631																								
<div style="border: 1px solid black; padding: 5px;"> <p>12 REBELLION RACING Lola B10/60 Coupé - Toyota LM P1</p> <p>1. Neel Jani</p> <p>2. Nicolas Prost</p> </div>																<div style="border: 1px solid black; padding: 5px;"> <p>15 OAK RACING Oak Pescarolo - Judd LM P1</p> <p>1. Matthieu Lahaye 3. Pierre Ragues</p> <p>2. Guillaume Moreau</p> </div>															
																								1	1	1:55.239	49.913	31.665	33.661	152.3	1:55.239
																								2	1	1:29.316	28.714	28.792	31.810	261.5	3:24.555
																								3	1	1:27.377	28.439	28.074	30.864	262.8	4:51.932
																								4	1	1:31.117	28.278	27.748	35.091	266.0	6:23.049
																								5	1	1:27.188	28.500	27.780	30.908	264.1	7:50.237
								6	1	1:38.908 B	28.516	30.159	40.233	262.1	9:29.145																
								7	1	7:35.586	6:32.218	28.930	34.438	177.3	17:04.731																
								8	1	1:26.469	28.002	27.761	30.706	264.1	18:31.200																
								9	1	1:27.392	28.017	28.089	31.286	263.4	19:58.592																
								10	1	1:26.570	28.429	27.559	30.582	262.1	21:25.162																
								11	1	1:26.045	27.993	27.493	30.559	264.7	22:51.207																
								12	1	1:36.691 B	28.034	28.840	39.817	264.7	24:27.898																
								13	1	7:06.698	6:06.983	28.268	31.447	185.6	31:34.596																
								14	1	1:30.106	28.242	27.629	34.235	264.7	33:04.702																
								15	1	1:27.402	27.954	28.036	31.412	263.4	34:32.104																
								16	1	1:28.000	28.228	28.006	31.766	264.7	36:00.104																
								17	1	1:26.656	28.216	27.674	30.766	263.4	37:26.760																
								18	1	1:26.769	28.179	27.574	31.016	265.4	38:53.529																
								19	1	1:36.788 B	28.228	29.874	38.686	261.5	40:30.317																
								20	1	11:45.267	...	29.139	31.638	187.2	52:15.584																
								21	1	1:44.324 B	28.993	29.992	45.339	261.5	53:59.908																
								22	1	7:53.305	6:52.236	28.658	32.411	186.5	1:01:53.213																
								23	1	1:28.422	28.386	28.359	31.677	262.1	1:03:21.635																
								24	1	1:38.098 B	28.083	27.690	42.325	262.8	1:04:59.733																
								<div style="border: 1px solid black; padding: 5px;"> <p>15 OAK RACING Oak Pescarolo - Judd LM P1</p> <p>1. Matthieu Lahaye 3. Pierre Ragues</p> <p>2. Guillaume Moreau</p> </div>																<div style="border: 1px solid black; padding: 5px;"> <p>23 TOKAI UNIV YGK POWER Courage-Oreca LC70 LM P1</p> <p>1. Mitsuyama Shogo</p> <p>2. Yokomizo Naoki</p> </div>							



ILMC 6 HOURS OF ZHUHAI Free Practice 1

Sector Analysis

								■ Personal Best ■ Session Best ■ B Crossing the finish line in pit lane									
Lap	D	Time	Sector 1	Sector 2	Sector 3	T. Spd	Elapsed	Lap	D	Time	Sector 1	Sector 2	Sector 3	T. Spd	Elapsed		
2	1	9:21.917B	8:03.230	33.236	45.451	125.3	11:34.074	5	2	1:33.051	30.038	30.142	32.871	249.4	11:56.808		
3	1	11:55.028B	...	32.644	45.338	160.7	23:29.102	6	2	1:31.060	29.579	28.748	32.733	251.2	13:27.868		
4	1	10:23.898B	9:11.069	31.046	41.783	180.9	33:53.000	7	2	1:30.309	29.061	28.737	32.511	252.3	14:58.177		
5	1	4:25.512B	3:11.422	30.906	43.184	166.9	38:18.512	8	2	1:30.582	29.051	28.772	32.759	253.5	16:28.759		
6	1	6:09.722B	4:58.514	29.803	41.405	114.9	44:28.234	9	2	1:30.502	29.314	29.002	32.186	251.7	17:59.261		
7	1	6:29.089	5:24.424	30.218	34.447	178.8	50:57.323	10	2	1:38.779B	29.288	29.178	40.313	252.3	19:38.040		
8	1	1:34.042	31.170	29.700	33.172	242.7	52:31.365	11	2	4:59.727	3:57.585	29.440	32.702	180.3	24:37.767		
9	1	1:47.280B	31.877	29.825	45.578	187.5	54:18.645	12	2	1:31.098	29.623	29.187	32.288	253.5	26:08.865		
10	2	29:35.187B	...	32.778	49.117	134.0	1:23:53.832	13	2	1:31.570	29.552	29.141	32.877	253.5	27:40.435		
11	2	3:41.340B	2:17.006	31.259	53.075	150.4	1:27:35.172	14	2	1:31.369	29.385	28.868	33.116	252.9	29:11.804		
24		OAK RACING			Oak Pescarolo - Judd												
		1. Jacques Nicolet			LM P1												
		2. Alexandre Premat			3. Olivier Pla												
1	2	2:03.037B	49.514	31.682	41.841	139.0	2:03.037	15	2	1:38.836B	29.859	29.353	39.624	250.6	30:50.640		
2	2	3:46.157	2:45.000	28.858	32.299	183.1	5:49.194	16	2	5:10.812	4:08.063	29.317	33.432	181.2	36:01.452		
3	2	1:28.235	28.612	28.047	31.576	257.8	7:17.429	17	2	1:31.582	29.483	29.199	32.900	252.9	37:33.034		
4	2	1:27.220	28.201	27.769	31.250	260.2	8:44.649	18	2	1:31.398	29.636	29.022	32.740	252.9	39:04.432		
5	2	1:37.084B	28.476	28.379	40.229	260.9	10:21.733	19	2	1:30.539	29.284	28.824	32.431	254.1	40:34.971		
6	2	5:59.090	4:53.469	32.213	33.408	175.9	16:20.823	20	2	1:31.392	29.290	28.932	33.170	254.1	42:06.363		
7	2	1:27.730	28.340	28.223	31.167	259.6	17:48.553	21	2	1:31.433	29.482	29.190	32.761	254.1	43:37.796		
8	2	1:26.572	28.178	27.845	30.549	261.5	19:15.125	22	2	1:30.898	29.238	29.061	32.599	255.3	45:08.694		
9	2	1:26.506	27.831	27.623	31.052	262.1	20:41.631	23	2	1:37.790B	29.486	28.788	39.516	255.3	46:46.484		
10	2	1:35.096B	28.156	28.180	38.760	260.2	22:16.727	24	2	5:53.536	4:51.079	29.307	33.150	181.5	52:40.020		
11	2	8:17.428	7:12.971	31.647	32.810	178.2	30:34.155	25	2	1:52.033B	31.469	32.081	48.483	249.4	54:32.053		
12	2	1:27.912	28.236	28.203	31.473	260.2	32:02.067	26	3	7:23.291	6:16.465	31.591	35.235	164.1	1:01:55.344		
13	2	1:26.324	28.024	27.577	30.723	261.5	33:28.391	27	3	1:35.053	31.060	30.250	33.743	242.7	1:03:30.397		
14	2	1:27.107	28.062	28.075	30.970	260.2	34:55.498	28	3	1:32.986	30.176	29.671	33.139	248.3	1:05:03.383		
15	2	1:36.241B	28.370	28.537	39.334	260.9	36:31.739	29	3	1:32.308	29.756	29.374	33.178	248.8	1:06:35.691		
16	1	5:00.058	3:57.737	29.506	32.815	180.9	41:31.797	30	3	1:31.545	29.859	29.020	32.666	249.4	1:08:07.236		
17	1	1:29.470	29.251	28.596	31.623	257.1	43:01.267	31	3	1:31.669	29.344	28.879	33.446	250.6	1:09:38.905		
18	1	1:30.129	29.841	28.835	31.453	254.7	44:31.396	32	3	1:31.479	29.545	29.151	32.783	248.8	1:11:10.384		
19	1	1:28.955	28.680	28.601	31.674	260.2	46:00.351	33	3	1:31.643	29.729	28.973	32.941	250.0	1:12:42.027		
20	1	1:29.748	29.339	28.656	31.753	256.5	47:30.099	34	3	1:40.564B	29.573	29.706	41.285	248.3	1:14:22.591		
21	1	1:29.298	28.828	28.338	32.132	259.0	48:59.397	35	3	4:14.761	3:10.792	29.321	34.648	182.4	1:18:37.352		
22	1	1:29.146	29.119	28.496	31.531	257.8	50:28.543	36	3	1:32.669	30.305	29.406	32.958	250.6	1:20:10.021		
23	1	1:38.999B	28.744	28.636	41.619	259.6	52:07.542	37	3	1:32.549	29.650	29.684	33.215	249.4	1:21:42.570		
24	1	9:39.059	8:35.263	29.669	34.127	161.0	1:01:46.601	38	3	1:30.542	29.417	28.819	32.306	249.4	1:23:13.112		
25	1	1:28.981	29.138	28.305	31.538	257.8	1:03:15.582	39	3	1:31.030	29.229	28.650	33.151	251.2	1:24:44.142		
26	1	1:29.923	28.965	29.287	31.671	259.0	1:04:45.505	40	3	1:30.803	29.125	29.340	32.338	250.0	1:26:14.945		
27	1	1:29.521	28.998	28.528	31.995	257.1	1:06:15.026								35	OAK RACING	
28	1	1:29.618	29.118	28.514	31.986	256.5	1:07:44.644			1. Patrice Lafargue			Oak Pescarolo - Judd				
29	1	1:28.971	28.750	28.454	31.767	260.2	1:09:13.615			2. Frederic Da Rocha			LM P2				
30	1	1:41.820B	29.180	28.939	43.701	259.6	1:10:55.435	1	2	1:57.989	49.199	33.264	35.526	129.0	1:57.989		
31	3	4:26.517	3:25.123	28.919	32.475	185.9	1:15:21.952	2	2	1:34.605	31.573	29.879	33.153	219.5	3:32.594		
32	3	1:29.263	28.927	28.489	31.847	259.0	1:16:51.215	3	2	1:44.874B	30.918	30.292	43.664	243.8	5:17.468		
33	3	1:27.409	28.273	27.973	31.163	258.4	1:18:18.624	4	2	5:43.224	4:39.902	29.710	33.612	174.2	11:00.692		
34	3	1:28.681	28.119	28.213	32.349	261.5	1:19:47.305	5	2	1:33.463	30.600	29.597	33.266	247.1	12:34.155		
35	3	1:26.792	28.355	27.776	30.661	260.9	1:21:14.097	6	2	1:33.711	30.349	29.915	33.447	250.6	14:07.866		
36	3	1:29.637	27.943	29.271	32.423	262.1	1:22:43.734	7	2	1:32.885	30.155	29.509	33.221	251.2	15:40.751		
37	3	1:36.413B	28.017	29.357	39.039	263.4	1:24:20.147	8	2	1:32.903	30.032	29.773	33.098	250.6	17:13.654		
26		SIGNATECH NISSAN			Oreca 03 - Nissan												
		1. Franck Mailleux			LM P2												
		2. Lucas Ordoñez			3. Jean-Karl Vernay												
1	2	2:41.855B	1:13.567	38.300	49.988	141.5	2:41.855	9	2	1:33.688	30.934	29.708	33.046	250.6	18:47.342		
2	2	4:35.542	3:28.975	31.621	34.946	177.9	7:17.397	10	2	1:33.522	30.640	29.729	33.153	248.8	20:20.864		
3	2	1:32.926	30.055	29.715	33.156	235.3	8:50.323	11	2	1:43.530B	30.097	30.999	42.434	250.0	22:04.394		
4	2	1:33.434	30.000	29.673	33.761	251.7	10:23.757	12	2	3:28.269	2:24.097	30.319	33.853	165.9	25:32.663		
5	2	1:33.874	30.400	30.101	33.373	247.1	30:17.888	13	2	1:36.245	30.765	29.691	35.789	248.8	27:08.908		
6	2	1:32.946	30.162	29.483	33.301	248.3	31:50.834	14	2	1:35.106	31.253	30.201	33.652	247.1	28:44.014		
7	2	1:33.377	30.254	29.784	33.339	250.0	33:24.211	15	2	1:33.874	30.400	30.101	33.373	247.1	30:17.888		
8	2	1:34.924	31.150	30.250	33.524	245.5	34:59.135	16	2	1:32.946	30.162	29.483	33.301	248.3	31:50.834		



ILMC

6 HOURS OF ZHUHAI

Free Practice 1

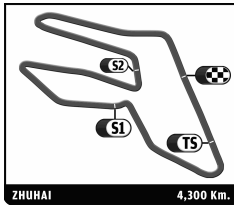
Sector Analysis

■ Personal Best
 ■ Session Best
 ■ Crossing the finish line in pit lane

Lap	D	Time	Sector 1	Sector 2	Sector 3	T. Spd	Elapsed	Lap	D	Time	Sector 1	Sector 2	Sector 3	T. Spd	Elapsed
19	2	1:45.355B	31.882	30.775	42.698	247.1	36:44.490	1	2	2:16.604B	57.440	32.616	46.548	149.6	2:16.604
20	2	3:30.025	2:26.187	30.316	33.522	169.8	40:14.515	2	2	2:52.998	1:44.883	31.783	36.332	166.4	5:09.602
21	2	1:34.276	30.298	30.178	33.800	248.3	41:48.791	3	2	1:38.145	32.226	30.736	35.183	236.3	6:47.747
22	2	1:34.212	30.740	29.831	33.641	247.1	43:23.003	4	2	1:36.955	31.394	30.603	34.958	237.4	8:24.702
23	2	1:33.718	30.375	29.687	33.656	248.8	44:56.721	5	2	1:42.393	35.553	30.768	36.072	236.8	10:07.095
24	2	1:33.972	30.295	29.799	33.878	249.4	46:30.693	6	2	1:37.125	31.473	30.781	34.871	236.3	11:44.220
25	2	1:34.864	30.687	29.898	34.279	228.8	48:05.557	7	2	1:36.839	31.339	30.589	34.911	237.9	13:21.059
26	2	1:44.667B	32.274	30.034	42.359	242.7	49:50.224	8	2	1:45.167B	31.432	30.715	43.020	232.8	15:06.226
27	1	4:08.299B	2:49.582	34.394	44.323	121.3	53:58.523	9	1	4:27.825	3:20.156	31.473	36.196	163.6	19:34.051
28	1	8:00.771	6:53.566	32.363	34.842	168.0	1:01:59.294	10	1	1:49.126	42.489	30.920	35.717	235.3	21:23.177
29	1	1:34.787	31.113	29.991	33.683	231.3	1:03:34.081	11	1	1:37.054	31.428	30.502	35.124	234.8	23:00.231
30	1	1:33.505	30.771	29.564	33.170	245.5	1:05:07.586	12	1	1:36.771	31.275	30.344	35.152	234.8	24:37.002
31	1	1:32.968	30.144	29.451	33.373	245.5	1:06:40.554	13	1	1:40.592	31.449	30.557	38.586	236.8	26:17.594
32	1	1:34.881	30.930	30.156	33.795	247.1	1:08:15.435	14	1	1:36.768	31.304	30.491	34.973	235.3	27:54.362
33	1	1:33.907	30.621	29.652	33.634	245.5	1:09:49.342	15	1	1:50.282B	31.377	30.527	48.378	233.3	29:44.644
34	1	1:33.446	30.507	29.554	33.385	248.3	1:11:22.788	16	1	6:58.125	5:51.396	31.115	35.614	163.1	36:42.769
35	1	1:33.469	30.501	29.750	33.218	244.3	1:12:56.257	17	1	1:36.936	31.466	30.667	34.803	232.3	38:19.705
36	1	1:32.820	30.340	29.405	33.075	246.6	1:14:29.077	18	1	1:36.819	31.138	30.561	35.120	236.8	39:56.524
37	1	1:43.700B	30.033	29.449	44.218	248.3	1:16:12.777	19	1	1:36.878	31.165	30.482	35.231	236.3	41:33.402
38	1	3:57.236B	2:38.141	32.131	46.964	127.8	1:20:10.013	20	1	1:36.355	31.202	30.427	34.726	236.8	43:09.757
39	1	4:26.595	3:21.411	30.769	34.415	171.7	1:24:36.608	21	1	1:36.170	31.190	30.429	34.551	228.3	44:45.927
40	1	1:34.522	30.925	30.187	33.410	247.7	1:26:11.130	22	1	1:35.985	31.024	30.305	34.656	236.3	46:21.912
								23	1	1:35.968	31.053	30.400	34.515	236.8	47:57.880
								24	1	1:43.884B	31.203	30.949	41.732	238.4	49:41.764
								25	1	13:21.581	...	30.852	34.890	166.4	1:03:03.345
								26	1	1:36.462	31.161	30.535	34.766	231.3	1:04:39.807
								27	1	1:36.564	31.287	30.541	34.736	233.8	1:06:16.371
								28	1	1:43.367B	31.103	30.582	41.682	234.3	1:07:59.738
								29	1	3:41.109	2:35.465	30.730	34.914	163.9	1:11:40.847
								30	1	1:36.494	31.268	30.540	34.686	236.3	1:13:17.341
								31	1	1:43.317B	31.242	30.722	41.353	235.8	1:15:00.658
								32	1	3:12.047	2:05.596	30.927	35.524	165.6	1:18:12.705
								33	1	1:37.138	31.405	30.637	35.096	232.3	1:19:49.843
								34	1	1:36.627	31.172	30.576	34.879	238.4	1:21:26.470
								35	1	1:37.259	31.592	30.600	35.067	236.8	1:23:03.729
								36	1	1:37.623	31.480	30.662	35.481	234.8	1:24:41.352
								37	1	1:36.695	31.068	30.646	34.981	236.8	1:26:18.047

50	LARBRE COMPETITION		Corvette C6-ZR1				
	1. Patrick Bornhauser 2. Julien Canal		3. Olivier Beretta LM GTE Am				
1	3	1:59.194	46.137	33.952	39.105	152.3	1:59.194
2	3	1:39.724	32.561	31.256	35.907	206.9	3:38.918
3	3	1:38.029	31.902	30.896	35.231	232.8	5:16.947
4	3	1:37.345	31.458	30.695	35.192	238.9	6:54.292
5	3	1:37.612	31.384	30.912	35.316	238.4	8:31.904
6	3	1:46.586B	31.458	30.623	44.505	238.9	10:18.490
7	3	6:48.713	5:41.604	31.811	35.298	167.2	17:07.203
8	3	1:37.175	31.477	30.539	35.159	237.4	18:44.378
9	3	1:37.243	31.429	30.546	35.268	237.9	20:21.621
10	3	1:47.951B	33.323	31.518	43.110	238.4	22:09.572
11	3	3:37.972	2:31.441	31.120	35.411	168.2	25:47.544
12	3	1:37.119	31.453	30.592	35.074	234.8	27:24.663
13	3	1:36.931	31.403	30.552	34.976	236.8	29:01.594
14	3	1:45.380B	31.530	30.744	43.106	241.1	30:46.974
15	3	23:35.094B	...	31.453	44.600	165.6	54:22.068
16	3	8:13.600	7:05.347	32.159	36.094	167.2	1:02:35.668
17	3	1:37.034	31.368	30.485	35.181	234.3	1:04:12.702
18	3	1:36.370	30.988	30.331	35.051	238.4	1:05:49.072
19	3	1:37.367	31.207	30.605	35.555	238.9	1:07:26.439
20	3	1:36.962	31.351	30.643	34.968	233.8	1:09:03.401
21	3	1:47.278B	32.079	31.263	43.936	225.5	1:10:50.679
22	2	3:56.328	2:43.824	33.532	38.972	135.8	1:14:47.007
23	2	1:40.013	32.391	31.387	36.235	232.8	1:16:27.020
24	2	1:38.162	31.596	30.949	35.617	233.3	1:18:05.182
25	2	1:42.368	31.795	32.553	38.020	238.9	1:19:47.550
26	2	1:37.908	31.446	30.876	35.586	235.3	1:21:25.458
27	2	1:40.503	33.290	31.430	35.783	237.4	1:23:05.961
28	2	1:38.134	31.365	31.069	35.700	237.9	1:24:44.095
29	2	1:39.386	31.766	31.895	35.725	233.8	1:26:23.481

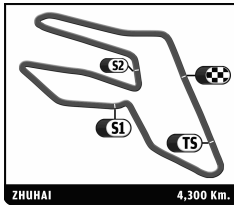
51	AF CORSE		Ferrari F458 Italia				
	1. Giancarlo Fisichella 2. Gianmaria Bruni		LM GTE Pro				
1	1	1:56.547	44.521	34.824	37.202	149.2	1:56.547
2	1	1:40.134	32.619	32.152	35.363	194.9	3:36.681
3	1	1:36.081	31.099	30.740	34.242	238.4	5:12.762
4	1	1:35.870	30.633	30.727	34.510	243.8	6:48.632
5	1	1:36.660	31.744	30.587	34.329	243.8	8:25.292
6	1	1:36.200	30.809	30.932	34.459	243.2	10:01.492
7	1	1:36.263	30.847	30.719	34.697	238.9	11:37.755
8	1	1:35.981	31.003	30.239	34.739	236.3	13:13.736
9	1	1:35.339	30.850	30.152	34.337	242.7	14:49.075
10	1	1:43.523B	30.900	30.836	41.787	234.8	16:32.598
11	1	5:35.015	4:28.567	31.639	34.809	169.3	22:07.613
12	1	1:35.791	30.948	30.303	34.540	241.1	23:43.404
13	1	1:35.662	30.954	30.145	34.563	238.9	25:19.066
14	1	2:07.799B	54.208	32.010	41.581	241.6	27:26.865
15	1	10:32.251	9:18.538	37.436	36.277	170.6	37:59.116
16	1	1:35.973	31.017	30.324	34.632	238.9	39:35.089
17	1	1:37.049	31.076	31.124	34.849	237.4	41:12.138



ILMC
6 HOURS OF ZHUHAI
Free Practice 1

Sector Analysis

								■ Personal Best ■ Session Best ■ Crossing the finish line in pit lane							
Lap	D	Time	Sector 1	Sector 2	Sector 3	T. Spd	Elapsed	Lap	D	Time	Sector 1	Sector 2	Sector 3	T. Spd	Elapsed
18	1	1:36.039	30.882	30.423	34.734	241.1	42:48.177	36	1	1:35.132	30.716	30.152	34.264	240.5	1:25:12.977
19	1	1:43.327 B	31.050	30.366	41.911	236.8	44:31.504	37	1	1:34.770	30.644	29.953	34.173	241.1	1:26:47.747
20	2	3:18.970	2:12.312	31.378	35.280	168.0	47:50.474	<div style="border: 1px solid black; padding: 5px;"> 57 KROHN RACING Ferrari F430 1.Tracy Krohn 3.Michele Rugolo 2.Niclas Jönsson LM GTE Am </div>							
21	2	1:36.916	31.389	30.564	34.963	234.8	49:27.390								
22	2	1:36.829	31.181	30.468	35.180	236.3	51:04.219								
23	2	1:37.107	31.343	30.642	35.122	240.0	52:41.326								
24	2	1:52.422 B	32.070	31.808	48.544	236.3	54:33.748								
25	2	8:00.294	6:53.945	31.181	35.168	167.2	1:02:34.042								
26	2	1:36.825	31.470	30.470	34.885	233.8	1:04:10.867								
27	2	1:36.554	31.106	30.613	34.835	238.9	1:05:47.421								
28	2	1:36.890	31.007	30.444	35.439	240.0	1:07:24.311								
29	2	1:36.403	30.912	30.491	35.000	240.5	1:09:00.714								
30	2	1:43.440 B	31.223	31.149	41.068	237.4	1:10:44.154								
31	2	4:48.501	3:42.818	30.773	34.910	135.0	1:15:32.655								
32	2	1:36.877	31.366	30.585	34.926	239.5	1:17:09.532								
33	2	1:36.893	31.163	30.541	35.189	237.9	1:18:46.425								
34	2	1:42.902 B	31.839	30.653	40.410	236.3	1:20:29.327								
35	2	4:23.568	3:13.849	30.225	39.494	170.6	1:24:52.895								
36	2	1:34.680	30.606	29.972	34.102	241.6	1:26:27.575								
								<div style="border: 1px solid black; padding: 5px;"> 56 BMW MOTORSPORT BMW M3 1.Andy Priaulx LM GTE Pro 2.Uwe Alzen </div>							
1	2	2:08.451	59.220	32.095	37.136	145.2	2:08.451	1	2	2:11.080	1:02.386	32.634	36.060	141.2	2:11.080
2	2	1:37.230	31.623	30.774	34.833	238.4	3:45.681	2	2	1:36.614	31.678	30.308	34.628	234.8	3:47.694
3	2	1:35.856	31.019	30.234	34.603	237.9	5:21.537	3	2	1:35.736	30.841	30.158	34.737	241.1	5:23.430
4	2	1:35.409	30.754	30.056	34.599	241.1	6:56.946	4	2	1:37.383	31.310	30.597	35.476	243.8	7:00.813
5	2	1:35.794	30.702	30.550	34.542	241.6	8:32.740	5	2	1:36.803	31.095	30.852	34.856	238.9	8:37.616
6	2	2:05.942 B	50.127	31.361	44.454	243.8	10:38.682	6	2	1:36.893	31.798	30.260	34.835	219.5	10:14.509
7	2	6:36.678	5:30.342	30.846	35.490	167.2	17:15.360	7	2	1:43.720 B	31.353	30.463	41.904	240.0	11:58.229
8	2	1:35.953	30.789	30.480	34.684	240.0	18:51.313	8	2	8:36.296	7:30.365	30.780	35.151	159.5	20:34.525
9	2	1:36.088	30.911	30.448	34.729	237.4	20:27.401	9	2	1:36.811	31.541	30.530	34.740	236.8	22:11.336
10	2	1:36.237	31.119	30.402	34.716	240.0	22:03.638	10	2	1:36.102	31.221	30.222	34.659	237.9	23:47.438
11	2	1:42.898 B	31.615	30.533	40.750	239.5	23:46.536	11	2	1:36.072	31.148	30.348	34.576	239.5	25:23.510
12	2	6:13.903	5:08.193	30.768	34.942	167.4	30:00.439	12	2	1:43.184 B	31.149	30.491	41.544	238.9	27:06.694
13	2	1:36.700	30.970	30.841	34.889	238.4	31:37.139	13	2	8:27.432	7:21.591	30.823	35.018	169.0	35:34.126
14	2	1:36.212	31.064	30.407	34.741	241.1	33:13.351	14	2	1:36.519	31.326	30.380	34.813	235.8	37:10.645
15	2	1:41.429	36.093	30.611	34.725	241.6	34:54.780	15	2	1:36.547	31.235	30.408	34.904	238.4	38:47.192
16	2	1:37.156	31.694	30.546	34.916	238.9	36:31.936	16	2	1:37.606	31.647	30.825	35.134	236.8	40:24.798
17	2	1:36.835	31.455	30.588	34.792	237.4	38:08.771	17	2	1:36.294	31.106	30.480	34.708	237.4	42:01.092
18	2	1:42.847 B	31.466	30.544	40.837	240.5	39:51.618	18	2	1:43.545 B	31.059	30.580	41.906	238.9	43:44.637
19	1	3:42.770	2:35.496	31.477	35.797	167.7	43:34.388	19	2	6:57.626	5:51.559	31.021	35.046	167.7	50:42.263
20	1	1:39.249	32.076	31.167	36.006	231.8	45:13.637	20	2	1:36.948	31.257	30.818	34.873	235.3	52:19.211
21	1	1:37.712	31.861	30.748	35.103	234.3	46:51.349	21	2	1:47.341 B	31.156	31.522	44.663	238.4	54:06.552
22	1	1:37.142	31.268	30.648	35.226	237.4	48:28.491	22	1	8:13.571	7:00.258	36.002	37.311	160.0	1:02:20.123
23	1	1:36.780	31.321	30.647	34.812	237.4	50:05.271	23	1	1:41.817	33.792	31.779	36.246	223.1	1:04:01.940
24	1	1:36.969	31.476	30.568	34.925	238.4	51:42.240	24	1	1:41.042	33.604	31.491	35.947	233.3	1:05:42.982
25	1	1:43.136 B	31.176	30.714	41.246	238.9	53:25.376	25	1	1:44.943	33.780	31.430	39.733	233.3	1:07:27.925
26	1	9:25.757	8:14.700	32.288	38.769	171.7	1:02:51.133	26	1	1:41.009	33.112	31.755	36.142	235.8	1:09:08.934
27	1	1:40.282	34.269	30.867	35.146	238.9	1:04:31.415	27	1	1:41.482	32.620	31.953	36.909	228.8	1:10:50.416
28	1	1:38.749	31.635	31.243	35.871	238.4	1:06:10.164	28	1	1:42.218	34.014	31.647	36.557	234.3	1:12:32.634
29	1	1:37.064	31.547	30.537	34.980	234.3	1:07:47.228	29	1	1:40.369	32.572	31.463	36.334	224.1	1:14:13.003
30	1	1:37.015	31.419	30.735	34.861	239.5	1:09:24.243	30	1	1:41.060	33.018	31.554	36.488	220.9	1:15:54.063
31	1	1:36.782	31.105	30.510	35.167	240.0	1:11:01.025	31	1	1:41.976	33.758	31.578	36.640	231.3	1:17:36.039
32	1	1:43.760 B	31.766	30.677	41.317	236.3	1:12:44.785	32	1	1:40.906	32.861	31.770	36.275	226.4	1:19:16.945
33	1	7:42.802	6:33.281	33.289	36.232	171.2	1:20:27.587	33	1	1:40.184	32.482	31.220	36.482	230.8	1:20:57.129
34	1	1:35.108	30.662	30.207	34.239	239.5	1:22:02.695	34	1	1:40.137	32.576	31.122	36.439	226.9	1:22:37.266
35	1	1:35.150	30.725	30.307	34.118	239.5	1:23:37.845	35	1	1:48.671 B	32.488	31.349	44.834	226.4	1:24:25.937
								<div style="border: 1px solid black; padding: 5px;"> 58 LUXURY RACING Ferrari F458 Italia 1.Anthony Beltoise LM GTE Pro 2.Dominik Farnbacher 3.Ralph Firman </div>							
1	3	5:25.790	3:58.194	45.428	42.168	81.4	5:25.790	1	3	5:25.790	3:58.194	45.428	42.168	81.4	5:25.790
2	3	1:43.772	32.857	31.643	39.272	208.9	7:09.562	2	3	1:43.772	32.857	31.643	39.272	208.9	7:09.562
3	3	1:37.816	31.805	30.734	35.277	229.8	8:47.378	3	3	1:37.816	31.805	30.734	35.277	229.8	8:47.378
4	3	1:39.189	31.345	30.675	37.169	236.8	10:26.567	4	3	1:39.189	31.345	30.675	37.169	236.8	10:26.567
5	3	1:37.509	31.619	30.718	35.172	237.9	12:04.076	5	3	1:37.509	31.619	30.718	35.172	237.9	12:04.076
6	3	1:51.943 B	31.520	32.796	47.627	237.4	13:56.019	6	3	1:51.943 B	31.520	32.796	47.627	237.4	13:56.019
7	3	5:03.670	3:53.648	34.392	35.630	106.2	18:59.689	7	3	5:03.670	3:53.648	34.392	35.630	106.2	18:59.689
8	3	1:37.138	31.296	30.685	35.157	236.8	20:36.827	8	3	1:37.138	31.296	30.685	35.157	236.8	20:36.827
9	3	1:41.181	31.149	33.755	36.277	239.5	22:18.008	9	3	1:41.181	31.149	33.755	36.277	239.5	22:18.008
10	3	1:37.862	31.258	31.435	35.169	237.9	23:55.870	10	3	1:37.862	31.258	31.435	35.169	237.9	23:55.870
11	3	1:36.685	31.248	30.605	34.832	237.4	25:32.555	11	3	1:36.685	31.248	30.605	34.832	237.4	25:32.555
12	3	1:49.779 B	33.229	31.093	45.457	213.9	27:22.334	12	3	1:49.779 B	33.229	31.093	45.457	213.9	27:22.334
13	2	4:11.157	3:03.124	31.713	36.320	166.4	31:33.491	13	2	4:11.157	3:03.124	31.713	36.320	166.4	31:33.491
14	2	1:39.536	32.182	31.247	36.107	230.3	33:13.027	14	2	1:39.536	32.182	31.247	36.107	230.3	33:13.027



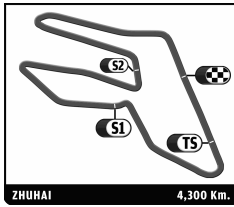
ILMC
6 HOURS OF ZHUHAI
 Free Practice 1
 Sector Analysis

							Personal Best		Session Best		B Crossing the finish line in pit lane				
Lap	D	Time	Sector 1	Sector 2	Sector 3	T. Spd	Elapsed	Lap	D	Time	Sector 1	Sector 2	Sector 3	T. Spd	Elapsed
15	2	1:38.689	32.237	30.970	35.482	228.3	34:51.716	2	1	1:37.905	31.952	30.906	35.047	233.8	3:46.731
16	2	1:38.091	31.750	30.889	35.452	230.3	36:29.807	3	1	1:36.362	30.984	30.315	35.063	237.4	5:23.093
17	2	1:38.026	31.253	31.254	35.519	236.3	38:07.833	4	1	1:38.899	31.229	31.228	36.442	237.4	7:01.992
18	2	1:37.189	31.256	30.700	35.233	236.3	39:45.022	5	1	1:36.942	31.005	30.767	35.170	239.5	8:38.934
19	2	1:37.677	31.816	30.762	35.099	234.3	41:22.699	6	1	1:38.812	31.537	30.718	36.557	217.3	10:17.746
20	2	1:37.300	31.455	30.925	34.920	235.8	42:59.999	7	1	1:55.327 B	35.030	34.052	46.245	202.2	12:13.073
21	2	1:38.504	31.616	31.638	35.250	239.5	44:38.503	8	2	13:51.605	...	33.490	39.166	147.5	26:04.678
22	2	1:46.904 B	32.167	31.043	43.694	238.9	46:25.407	9	2	1:43.696	33.051	33.768	36.877	229.3	27:48.374
23	2	6:50.145 B	5:37.095	31.128	41.922	166.9	53:15.552	10	2	1:40.753	32.601	31.868	36.284	224.1	29:29.127
24	1	9:07.259	7:58.663	32.321	36.275	166.4	1:02:22.811	11	2	1:39.900	32.290	31.409	36.201	223.6	31:09.027
25	1	1:40.038	32.905	31.472	35.661	233.8	1:04:02.849	12	2	1:40.916	32.454	31.877	36.585	231.3	32:49.943
26	1	1:38.159	31.882	30.906	35.371	229.8	1:05:41.008	13	2	1:40.600	32.587	31.694	36.319	232.3	34:30.543
27	1	1:37.562	31.517	30.748	35.297	233.3	1:07:18.570	14	2	1:40.672	32.656	31.584	36.432	236.8	36:11.215
28	1	1:45.516 B	32.054	30.685	42.777	235.8	1:09:04.086	15	2	1:41.458	32.770	32.248	36.440	229.3	37:52.673
29	1	5:09.174	4:02.689	30.712	35.773	170.6	1:14:13.260	16	2	1:40.298	32.431	31.765	36.102	231.3	39:32.971
30	1	1:37.888	31.628	30.490	35.770	235.3	1:15:51.148	17	2	1:42.810	32.559	32.278	37.973	220.4	41:15.781
31	1	1:37.834	31.870	30.617	35.347	231.3	1:17:28.982	18	2	1:42.546	33.704	32.350	36.492	224.1	42:58.327
32	1	1:36.657	31.112	30.614	34.931	236.3	1:19:05.639	19	2	1:43.618	32.628	33.626	37.364	225.9	44:41.945
33	1	1:36.942	31.397	30.584	34.961	228.3	1:20:42.581	20	2	1:41.029	32.549	31.814	36.666	227.8	46:22.974
34	1	1:37.149	31.141	30.564	35.444	234.3	1:22:19.730	21	2	1:41.573	32.897	31.655	37.021	219.5	48:04.547
35	1	1:36.631	31.428	30.481	34.722	230.8	1:23:56.361	22	2	1:52.495 B	33.237	33.034	46.224	227.4	49:57.042
36	1	1:50.040 B	33.827	32.758	43.455	231.3	1:25:46.401	23	2	16:35.766	...	34.579	38.657	136.0	1:06:32.808

59 LUXURY RACING							Ferrari F458 Italia	
1. Stephane Ortelli							LM GTE Pro	
2. Frederic Makowiecki								
1	1	5:11.638	4:03.867	31.971	35.800	170.6	5:11.638	
2	1	1:38.386	31.501	31.422	35.463	236.8	6:50.024	
3	1	1:36.743	31.000	30.801	34.942	237.9	8:26.767	
4	1	1:57.679	50.407	31.286	35.986	238.9	10:24.446	
5	1	2:02.248 B	47.184	32.022	43.042	237.9	12:26.694	
6	1	10:10.704	9:04.684	31.046	34.974	169.5	22:37.398	
7	1	1:36.810	31.474	30.655	34.681	231.8	24:14.208	
8	1	1:36.315	31.146	30.494	34.675	234.8	25:50.523	
9	1	1:36.232	31.153	30.461	34.618	235.8	27:26.755	
10	1	1:45.120 B	31.458	30.929	42.733	236.8	29:11.875	
11	1	8:05.662	6:59.621	31.056	34.985	169.3	37:17.537	
12	1	1:36.917	31.203	30.577	35.137	235.8	38:54.454	
13	1	1:36.419	31.147	30.580	34.692	235.3	40:30.873	
14	1	1:56.537 B	40.290	31.753	44.494	237.4	42:27.410	
15	2	3:59.003	2:52.548	31.167	35.288	170.9	46:26.413	
16	2	1:39.103	31.685	31.307	36.111	235.8	48:05.516	
17	2	1:39.216	32.713	31.277	35.226	222.7	49:44.732	
18	2	1:37.009	31.460	30.472	35.077	235.3	51:21.741	
19	2	1:43.817 B	31.293	30.562	41.962	236.3	53:05.558	
20	2	12:50.714	...	31.259	35.118	168.5	1:05:56.272	
21	2	1:37.743	31.601	30.939	35.203	234.8	1:07:34.015	
22	2	1:37.304	31.530	30.771	35.003	234.8	1:09:11.319	
23	2	1:38.620	31.305	31.291	36.024	236.3	1:10:49.939	
24	2	1:46.719 B	31.701	31.545	43.473	233.8	1:12:36.658	
25	2	9:09.646	8:02.676	31.940	35.030	166.7	1:21:46.304	
26	2	1:35.994	31.163	30.377	34.454	235.3	1:23:22.298	
27	2	1:35.519	30.939	30.145	34.435	236.8	1:24:57.817	
28	2	1:35.531	30.954	30.160	34.417	237.9	1:26:33.348	

60 GULF AMR MIDDLE EAST							Aston Martin Vantage	
1. Fabien Giroix							LM GTE Am	
2. Roald Goethe								
1	1	2:08.826	1:00.363	32.777	35.686	145.7	2:08.826	

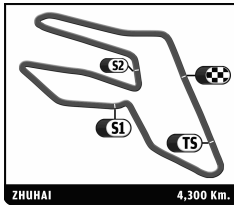
61 AF CORSE							Ferrari F430	
1. Marco Cioci							LM GTE Am	
2. Philip Ma								
1	1	8:36.255	7:14.450	40.050	41.755	131.5	8:36.255	
2	1	2:00.333 B	37.278	34.348	48.707	187.8	10:36.588	
3	1	2:58.454 B	1:34.464	37.895	46.095	151.5	13:35.042	
4	1	8:40.344	7:27.769	32.931	39.644	131.7	22:15.386	
5	1	1:42.852	33.251	32.770	36.831	212.6	23:58.238	
6	1	1:40.798	32.737	31.611	36.450	219.1	25:39.036	
7	1	1:40.457	32.545	31.590	36.322	223.6	27:19.493	
8	1	1:39.631	32.180	31.452	35.999	225.5	28:59.124	
9	1	1:39.923	32.276	31.682	35.965	219.1	30:39.047	
10	1	1:48.503 B	32.887	31.484	44.132	207.7	32:27.550	
11	1	4:32.671	3:24.607	31.820	36.244	98.7	37:00.221	
12	1	1:39.665	32.176	31.476	36.013	222.2	38:39.886	
13	1	1:39.401	31.986	31.304	36.111	225.0	40:19.287	
14	1	1:48.848 B	32.823	31.705	44.320	219.5	42:08.135	
15	1	21:38.835	...	33.185	36.387	145.4	1:03:46.970	
16	1	1:37.926	31.362	31.091	35.473	227.8	1:05:24.896	
17	1	1:37.251	31.149	30.840	35.262	229.3	1:07:02.147	
18	1	1:37.130	31.193	30.859	35.078	234.3	1:08:39.277	
19	1	1:37.632	31.251	30.882	35.499	236.8	1:10:16.909	
20	1	1:48.112 B	32.489	31.678	43.945	219.5	1:12:05.021	
21	2	5:27.317	4:05.533	38.616	43.168	138.8	1:17:32.338	
22	2	1:49.509	35.829	34.323	39.357	188.2	1:19:21.847	
23	2	1:45.470	34.058	32.955	38.457	196.7	1:21:07.317	



ILMC 6 HOURS OF ZHUHAI Free Practice 1

Sector Analysis

							Personal Best		Session Best		B Crossing the finish line in pit lane				
Lap	D	Time	Sector 1	Sector 2	Sector 3	T. Spd	Elapsed	Lap	D	Time	Sector 1	Sector 2	Sector 3	T. Spd	Elapsed
24	2	1:45.887	33.597	34.318	37.972	201.5	1:22:53.204								
25	2	1:50.593	37.189	34.908	38.496	194.2	1:24:43.797								
26	2	1:43.105	33.696	32.136	37.273	194.6	1:26:26.902								
62 CRS RACING							Ferrari F430								
1. Pierre Ehret			3. Roger Wills			LM GTE Am									
2. Tim Mullen															
1	2	2:04.643	48.752	36.989	38.902	126.5	2:04.643								
2	2	2:04.244	44.866	33.979	45.399	237.4	4:08.887								
3	2	3:52.288	2:45.638	31.304	35.346	169.3	8:01.175								
4	2	1:36.255	31.320	30.174	34.761	230.8	9:37.430								
5	2	1:36.178	31.039	30.289	34.850	233.8	11:13.608								
6	2	1:36.261	31.186	30.336	34.739	231.8	12:49.869								
7	2	1:36.570	31.114	30.390	35.066	236.3	14:26.439								
8	2	1:44.268	31.600	30.851	41.817	229.8	16:10.707								
9	3	8:12.351	7:02.442	32.975	36.934	159.5	24:23.058								
10	3	1:40.410	32.469	31.580	36.361	221.3	26:03.468								
11	3	1:40.156	32.132	31.629	36.395	232.8	27:43.624								
12	3	1:39.602	32.248	31.441	35.913	223.1	29:23.226								
13	3	1:39.495	31.928	31.444	36.123	232.3	31:02.721								
14	3	1:40.391	32.969	31.507	35.915	228.3	32:43.112								
15	3	1:38.938	32.100	30.970	35.868	224.5	34:22.050								
16	3	1:39.306	31.915	31.239	36.152	230.3	36:01.356								
17	3	1:39.260	32.488	31.076	35.696	227.4	37:40.616								
18	3	1:38.732	32.167	31.098	35.467	226.4	39:19.348								
19	3	1:38.747	32.206	31.081	35.460	220.9	40:58.095								
20	3	1:38.219	31.794	31.099	35.326	231.3	42:36.314								
21	3	1:39.383	31.990	31.140	36.253	232.3	44:15.697								
22	3	1:38.393	31.820	31.058	35.515	228.8	45:54.090								
23	3	1:47.413	32.079	31.556	43.778	220.9	47:41.503								
24	1	6:32.121	5:07.191	32.636	52.294	145.6	54:13.624								
25	1	7:58.867	6:50.917	31.654	36.296	156.1	1:02:12.491								
26	1	1:40.670	33.010	31.750	35.910	232.3	1:03:53.161								
27	1	1:38.821	32.213	31.028	35.580	235.8	1:05:31.982								
28	1	1:38.857	32.123	30.922	35.812	224.5	1:07:10.839								
29	1	1:38.778	32.225	30.834	35.719	228.3	1:08:49.617								
30	1	1:38.869	31.945	30.988	35.936	231.8	1:10:28.486								
31	1	1:39.027	31.878	31.255	35.894	233.8	1:12:07.513								
32	1	1:38.741	32.134	31.103	35.504	234.8	1:13:46.254								
33	1	1:47.545	32.005	30.910	44.630	229.3	1:15:33.799								
34	1	7:21.006	6:13.495	31.617	35.894	147.9	1:22:54.805								
35	1	1:40.211	33.659	30.908	35.644	220.4	1:24:35.016								
36	1	1:39.197	32.025	31.558	35.614	234.3	1:26:14.213								
63 PROTON COMPETITION							Porsche 911 RSR (997)								
1. Richard Lietz			3. Gianluca Roda			LM GTE Am									
2. Christian Ried															
1	1	2:50.683	1:24.955	36.189	49.539	129.3	2:50.683								
2	1	13:02.971	...	33.117	37.270	135.0	15:53.654								
3	1	1:38.925	32.507	30.825	35.593	206.9	17:32.579								
4	1	1:37.380	31.617	30.570	35.193	224.1	19:09.959								
5	1	1:36.455	31.039	30.445	34.971	238.4	20:46.414								
6	1	1:36.634	31.075	30.723	34.836	237.9	22:23.048								
7	1	1:46.135	31.139	30.575	44.421	238.4	24:09.183								
64 LOTUS JETALLIANCE							Lotus Evora								
1. Oskar Slingerland			3. Rene Rasmussen			LM GTE Pro									
2. Martin Rich															
1	2	3:08.435	1:55.159	35.452	37.824	148.1	3:08.435								
65 LOTUS JETALLIANCE							Lotus Evora								
1. James Rossiter			3. David Heinemeier			LM GTE Pro									
2. Johnny Mowlem															
1	2	2:14.125	1:04.156	33.035	36.934	153.6	2:14.125								
2	2	1:41.049	32.977	31.729	36.343	218.6	3:55.174								
3	2	1:39.487	32.151	31.371	35.965	222.7	5:34.661								
4	2	1:46.672	31.916	31.211	43.545	221.3	7:21.333								
5	2	11:32.718	...	32.374	36.720	164.4	18:54.051								
6	2	1:40.345	32.794	31.252	36.299	225.9	20:34.396								
7	2	1:39.510	32.320	31.252	35.938	223.1	22:13.906								
8	2	1:38.739	31.834	31.148	35.757	233.3	23:52.645								
9	2	1:45.474	32.081	31.237	42.156	229.3	25:38.119								
10	1	3:33.945	2:25.372	31.991	36.582	164.1	29:12.064								
11	1	1:39.846	32.113	31.300	36.433	232.3	30:51.910								
12	1	1:38.578	31.896	31.041	35.641	230.8	32:30.488								
13	1	1:38.431	31.755	31.086	35.590	235.3	34:08.919								
14	1	1:38.692	31.588	30.976	36.128	234.3	35:47.611								
15	1	1:38.154	31.602	30.879	35.673	234.3	37:25.765								
16	1	1:45.305	31.842	31.363	42.100	230.8	39:11.070								
17	3	5:06.206	3:57.133	32.522	36.551	152.8	44:17.276								
18	3	1:40.101	32.365	31.578	36.158	220.4	45:57.377								
19	3	1:39.642	32.007	31.904	35.731	220.4	47:37.019								
20	3	1:41.026	32.854	32.107	36.065	219.1	49:18.045								
21	3	1:39.788	32.223	31.540	36.025	218.2	50:57.833								
22	3	1:41.021	33.287	31.714	36.020	228.8	52:38.854								
23	3	1:49.673	32.156	31.916	45.601	221.3	54:28.527								
90 PTRS RACING							Formula Le Mans - Oreca - 09								
1. Wei Liang Chen			3. Rene Rasmussen			FLM									
2. Zhang Shanqi															
1	2	3:08.435	1:55.159	35.452	37.824	148.1	3:08.435								

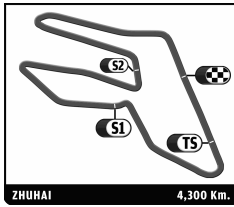


ILMC 6 HOURS OF ZHUHAI Free Practice 1

Sector Analysis

■ Personal Best
 ■ Session Best
 ■ Crossing the finish line in pit lane

Lap	D	Time	Sector 1	Sector 2	Sector 3	T. Spd	Elapsed	Lap	D	Time	Sector 1	Sector 2	Sector 3	T. Spd	Elapsed
94 HITOTSUYAMA RACING 1. Akihiro Suzuki 2. Michael Kim 3. Carlo Van Dam Audi R8 LMS GTC								8	3	7:38.670	6:30.352	32.104	36.214	163.9	21:55.534
1	1	1:14:53.079	...	32.348	36.052	160.2	1:14:53.079	9	3	1:37.741	31.576	30.715	35.450	232.3	23:33.275
2	1	1:38.755	32.090	31.618	35.047	234.3	1:16:31.834	10	3	1:37.308	31.587	30.648	35.073	230.8	25:10.583
3	1	1:36.811	31.388	30.430	34.993	242.2	1:18:08.645	11	3	1:37.163	31.337	30.533	35.293	236.3	26:47.746
4	1	1:35.814	30.959	30.068	34.787	244.3	1:19:44.459	12	3	1:37.296	31.424	30.727	35.145	237.4	28:25.042
5	1	1:36.304	31.179	30.756	34.369	242.7	1:21:20.763	13	3	1:37.137	31.375	30.556	35.206	234.8	30:02.179
6	1	1:42.557 B	30.909	30.283	41.365	242.7	1:23:03.320	14	3	1:37.277	31.332	30.854	35.091	220.4	31:39.456
7	3	2:23.111 B	1:00.831	35.808	46.472	137.8	2:23.111	15	3	1:43.207 B	31.511	30.721	40.975	234.3	33:22.663
8	3	4:09.823	2:57.515	34.243	38.065	160.5	6:32.934	16	1	5:52.124	4:41.315	32.043	38.766	150.6	39:14.787
9	3	1:39.269	32.439	30.924	35.906	210.1	8:12.203	17	1	1:39.107	32.270	31.109	35.728	230.8	40:53.894
10	3	1:37.691	31.626	30.727	35.338	232.3	9:49.894	18	1	1:38.005	31.568	30.771	35.666	238.9	42:31.899
11	3	1:37.466	31.487	30.698	35.281	234.3	11:27.360	19	1	1:37.593	31.530	30.786	35.277	240.0	44:09.492
12	3	1:46.765 B	31.744	30.735	44.286	229.3	13:14.125	20	1	1:37.571	31.402	30.794	35.375	243.2	45:47.063
13	3	5:50.723	4:43.022	31.492	36.209	164.9	19:04.848	21	1	1:36.994	31.238	30.656	35.100	243.8	47:24.057
14	3	1:38.312	31.867	30.894	35.551	227.8	20:43.160	22	1	1:44.812 B	31.412	30.933	42.467	239.5	49:08.869
15	3	1:38.005	31.841	30.765	35.399	232.3	22:21.165	23	1	4:22.074 B	3:06.843	32.318	42.913	134.0	53:30.943
16	3	1:37.933	31.674	30.741	35.518	230.8	23:59.098	24	1	8:29.298	7:18.286	33.054	37.958	137.1	1:02:00.241
17	3	1:48.307 B	32.254	31.731	44.322	228.8	25:47.405	25	1	1:39.122	32.066	31.314	35.742	218.2	1:03:39.363
18	3	4:59.420	3:50.442	32.482	36.496	155.4	30:46.825	26	1	1:37.637	31.719	30.812	35.106	235.3	1:05:17.000
19	3	1:37.754	31.784	30.740	35.230	232.8	32:24.579	27	1	1:36.930	31.287	30.639	35.004	243.2	1:06:53.930
20	3	1:37.167	31.478	30.672	35.017	233.8	34:01.746	28	1	1:42.687 B	31.097	30.506	41.084	242.2	1:08:36.617
21	3	1:39.612	31.506	31.015	37.091	235.3	35:41.358	29	2	3:36.173	2:28.920	31.039	36.214	146.1	1:12:12.790
22	3	1:46.683 B	32.223	31.047	43.413	225.5	37:28.041	30	2	1:38.883	31.771	31.334	35.778	241.6	1:13:51.673
23	1	4:43.434	3:27.515	36.727	39.192	120.1	42:11.475	31	2	1:37.582	31.527	30.730	35.325	238.9	1:15:29.255
24	1	1:43.522	33.088	32.468	37.966	230.3	43:54.997	32	2	1:37.206	31.435	30.632	35.139	241.6	1:17:06.461
25	1	1:43.008	32.935	32.430	37.643	233.3	45:38.005	33	2	1:38.851	31.303	30.989	36.559	241.6	1:18:45.312
26	1	1:41.288	32.477	31.731	37.080	223.1	47:19.293	34	2	1:45.205	37.805	31.403	35.997	244.9	1:20:30.517
27	1	1:40.094	32.198	31.309	36.587	228.8	48:59.387	35	2	1:37.548	31.434	30.676	35.438	239.5	1:22:08.065
28	1	1:41.357	32.429	31.686	37.242	222.2	50:40.744	36	2	1:37.427	31.220	30.927	35.280	242.2	1:23:45.492
29	1	1:52.495 B	32.272	32.559	47.664	216.4	52:33.239	37	2	1:37.131	31.341	30.714	35.076	240.5	1:25:22.623
30	1	1:43.727	33.784	33.213	36.730	212.6	1:03:41.158	38	2	1:36.968	31.279	30.620	35.069	244.9	1:26:59.591
31	1	1:39.552	32.089	31.177	36.286	219.5	1:05:20.710	97 AUDI RACE EXPERIENCE 1. Florian Gruber 2. Jeffrey Lee 3. Hing Tak Mak Audi R8 LMS GTC							
32	1	1:39.470	31.918	31.060	36.492	228.3	1:07:00.180	1	1	2:52.009	1:39.325	34.036	38.648	132.7	2:52.009
33	1	1:40.997	31.973	32.627	36.397	227.8	1:08:41.177	2	1	1:42.444	33.413	32.216	36.815	229.3	4:34.453
34	1	1:39.052	31.915	31.177	35.960	220.0	1:10:20.229	3	1	1:40.366	32.092	31.859	36.415	233.3	6:14.819
35	1	1:48.808 B	31.912	31.063	45.833	229.8	1:12:09.037	4	1	1:39.753	31.791	31.429	36.533	241.1	7:54.572
36	2	3:31.925	2:21.442	33.060	37.423	136.0	1:15:40.962	5	1	1:38.936	31.546	31.022	36.368	240.5	9:33.508
37	2	1:43.069	33.097	31.943	38.029	232.8	1:17:24.031	6	1	1:39.221	31.629	31.036	36.556	238.4	11:12.729
38	2	1:41.071	32.190	31.533	37.348	233.8	1:19:05.102	7	1	1:48.516 B	31.773	31.787	44.956	234.3	13:01.245
39	2	1:41.179	33.139	31.589	36.451	228.8	1:20:46.281	8	1	5:15.167	4:07.564	31.511	36.092	162.4	18:16.412
40	2	1:41.258	32.458	31.165	37.635	231.3	1:22:27.539	9	1	1:38.852	31.744	30.990	36.118	238.9	19:55.264
41	2	1:40.172	32.329	31.298	36.545	230.8	1:24:07.711	10	1	1:40.341	32.887	31.046	36.408	238.9	21:35.605
42	2	1:39.759	32.317	31.134	36.308	227.4	1:25:47.470	11	1	1:38.567	31.660	30.873	36.034	237.4	23:14.172
43	2	1:50.502 B	32.423	32.458	45.621	234.3	1:27:37.972	12	1	1:39.754	32.320	31.005	36.429	238.9	24:53.926
96 TEAM AMG 1. Congfu Cheng 2. Lance David Arnold Mercedes SLS AMG GT3 GTC								13	1	1:38.649	31.838	30.865	35.946	231.8	26:32.575
1	3	4:17.809	3:08.229	32.924	36.656	154.1	4:17.809	14	1	1:47.203 B	31.929	30.773	44.501	234.8	28:19.778
2	3	1:39.614	32.257	31.476	35.881	228.3	5:57.423	15	1	5:57.749	4:49.692	31.990	36.067	165.1	34:17.527
3	3	1:39.750	32.451	31.570	35.729	210.9	7:37.173	16	1	1:39.115	32.444	30.916	35.755	236.8	35:56.642
4	3	1:39.021	32.314	31.246	35.461	223.6	9:16.194	17	1	1:38.116	31.602	30.478	36.036	236.8	37:34.758
5	3	1:38.482	31.905	30.973	35.604	232.3	10:54.676	18	1	1:38.155	31.895	30.600	35.660	224.5	39:12.913
6	3	1:37.865	31.718	30.804	35.343	230.3	12:32.541	19	1	1:37.821	31.647	30.623	35.551	239.5	40:50.734
7	3	1:44.323 B	31.517	31.285	41.521	238.4	14:16.864	20	1	1:37.473	31.517	30.481	35.475	239.5	42:28.207
								21	1	1:46.276 B	31.475	30.665	44.136	237.9	44:14.483
								22	1	3:56.472	2:49.684	30.907	35.881	167.2	48:10.955
								23	1	1:38.089	31.649	30.926	35.514	233.8	49:49.044

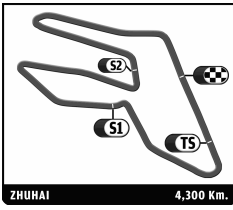


ILMC
6 HOURS OF ZHUHAI
Free Practice 1

Sector Analysis

Lap	D	Time	Sector 1	Sector 2	Sector 3	T. Spd	Elapsed	Lap	D	Time	Sector 1	Sector 2	Sector 3	T. Spd	Elapsed
24	1	1:38.017	31.411	30.744	35.862	235.8	51:27.061								
25	1	1:47.694 B	31.487	30.642	45.565	237.9	53:14.755								
26	3	9:27.301	8:15.775	33.469	38.057	148.1	1:02:42.056								
27	3	1:43.371	33.425	32.609	37.337	227.4	1:04:25.427								
28	3	1:44.638	33.621	33.559	37.458	229.3	1:06:10.065								
29	3	1:45.826	33.694	33.352	38.780	209.7	1:07:55.891								
30	3	1:43.199	33.371	32.261	37.567	225.0	1:09:39.090								
31	3	1:41.649	33.191	31.679	36.779	224.5	1:11:20.739								
32	3	1:42.545	33.627	32.054	36.864	235.3	1:13:03.284								
33	3	1:54.626 B	33.382	33.223	48.021	226.9	1:14:57.910								
34	3	3:50.530	2:38.249	32.370	39.911	161.0	1:18:48.440								
35	3	1:45.077	34.169	33.129	37.779	229.8	1:20:33.517								
36	3	1:46.132	33.743	32.573	39.816	229.3	1:22:19.649								
37	3	1:42.552	33.797	31.924	36.831	209.3	1:24:02.201								
38	3	1:42.690	33.632	32.023	37.035	238.4	1:25:44.891								

98		AUDI SPORT C RACING			Audi R8 LMS		
		1. Edoardo Mortara	3. Alexandre Imperatori			GTC	
		2. Darryl O'Young					
1	2	4:33.151	3:24.782	31.938	36.431	162.9	4:33.151
2	2	1:37.995	31.649	30.789	35.557	239.5	6:11.146
3	2	1:37.875	31.160	30.467	36.248	232.8	7:49.021
4	2	1:39.886	32.742	31.326	35.818	236.3	9:28.907
5	2	1:37.616	31.528	30.669	35.419	237.4	11:06.523
6	2	1:37.814	31.479	30.711	35.624	233.8	12:44.337
7	2	1:45.710 B	31.612	30.798	43.300	240.0	14:30.047
8	2	8:06.481	6:58.921	31.607	35.953	166.7	22:36.528
9	2	1:39.429	32.401	31.358	35.670	229.8	24:15.957
10	2	1:38.211	31.639	31.001	35.571	234.8	25:54.168
11	2	1:38.139	31.749	30.707	35.683	230.3	27:32.307
12	2	1:46.525 B	31.943	32.226	42.356	235.3	29:18.832
13	1	4:28.317	3:14.857	34.336	39.124	105.7	33:47.149
14	1	1:41.181	33.014	31.581	36.586	213.4	35:28.330
15	1	1:39.188	32.186	31.093	35.909	225.0	37:07.518
16	1	1:38.905	31.968	31.089	35.848	233.3	38:46.423
17	1	1:49.353 B	31.977	34.024	43.352	233.3	40:35.776
18	1	4:09.773	2:59.647	33.128	36.998	107.2	44:45.549
19	1	1:39.896	32.707	31.182	36.007	211.8	46:25.445
20	1	1:39.638	31.883	31.004	36.751	236.3	48:05.083
21	1	1:42.887	34.151	31.821	36.915	227.4	49:47.970
22	1	1:43.796 B	31.849	30.848	41.099	232.3	51:31.766
23	1	10:54.385	9:45.676	31.869	36.840	162.4	1:02:26.151
24	1	1:39.008	32.016	31.045	35.947	227.4	1:04:05.159
25	1	1:38.374	31.711	30.927	35.736	235.3	1:05:43.533
26	1	1:39.030	32.106	30.969	35.955	235.3	1:07:22.563
27	1	1:46.672 B	31.948	32.606	42.118	236.3	1:09:09.235
28	3	3:26.447	2:18.128	31.817	36.502	149.6	1:12:35.682
29	3	1:39.226	32.113	31.358	35.755	230.3	1:14:14.908
30	3	1:43.099	31.704	31.455	39.940	234.8	1:15:58.007
31	3	1:38.350	31.683	30.936	35.731	235.8	1:17:36.357
32	3	1:52.392 B	33.308	33.323	45.761	198.2	1:19:28.749
33	3	3:54.651	2:46.743	31.240	36.668	108.9	1:23:23.400
34	3	1:38.105	31.615	30.896	35.594	235.8	1:25:01.505
35	3	1:38.032	31.797	30.829	35.406	236.3	1:26:39.537



Computerised results and timing service

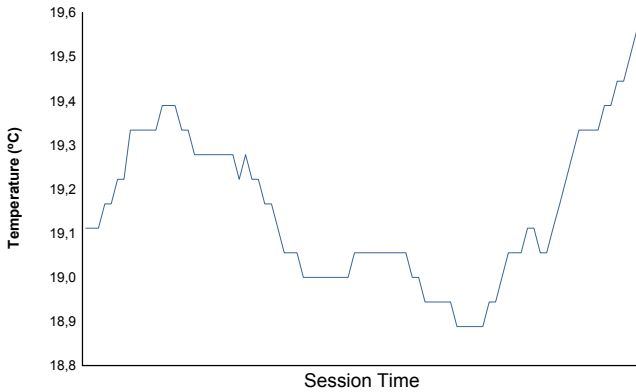
6 HOURS OF ZHUHAI

ILMC

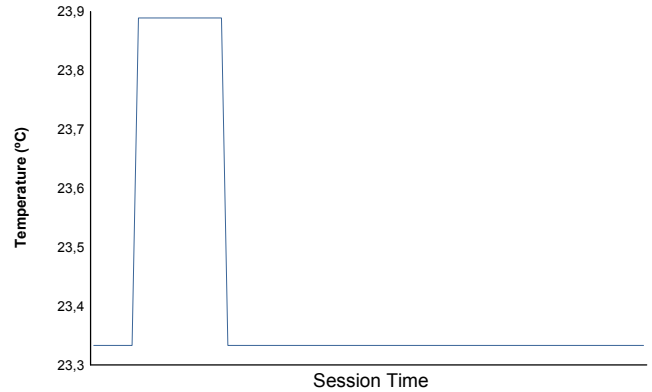
Free Practice 1

Weather Report

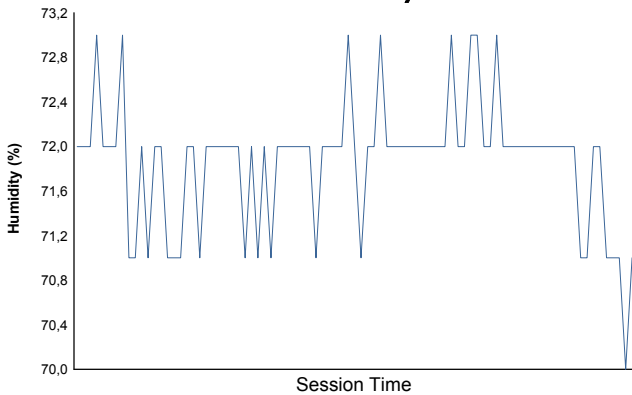
Air Temperature



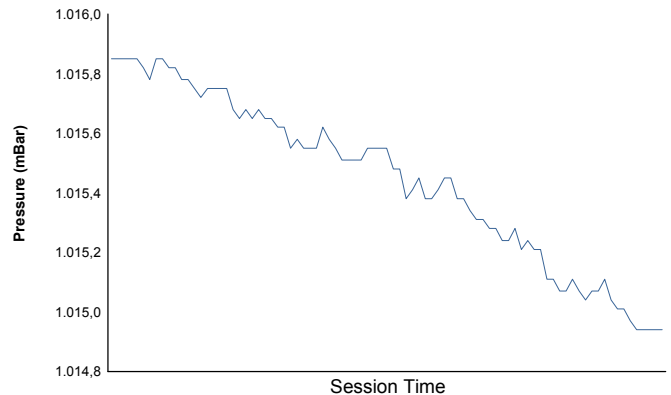
Track Temperature



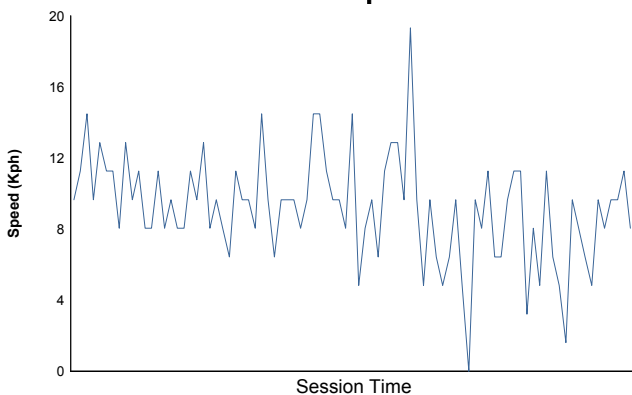
Humidity



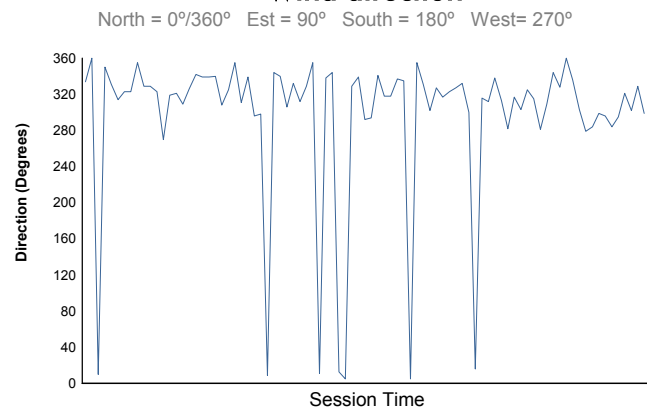
Pressure



Wind Speed



Wind direction



Track Status:

DRY